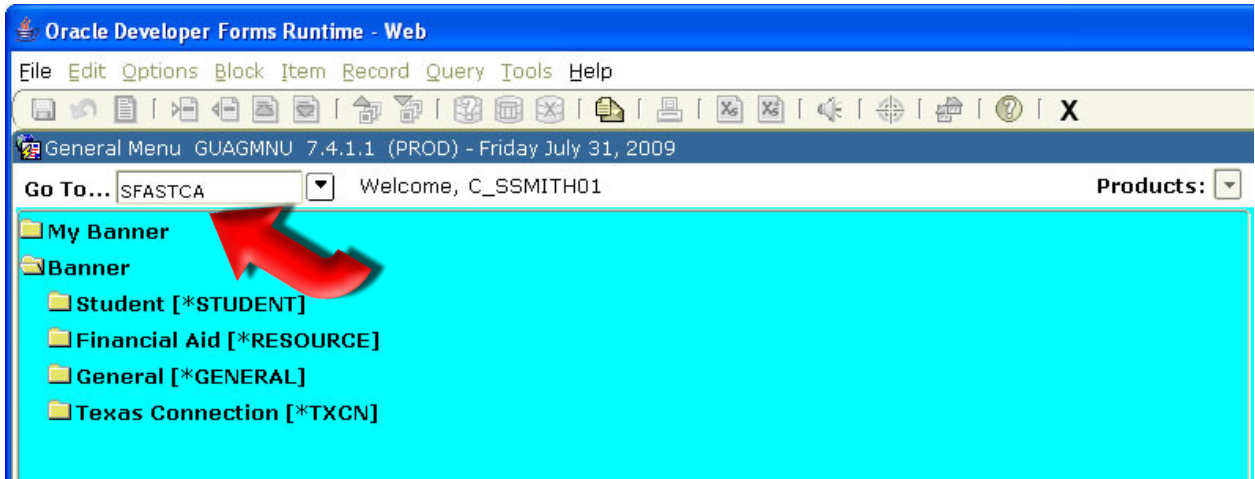


SFASTCA

SFASTCA contains audit information on a student's course registration.

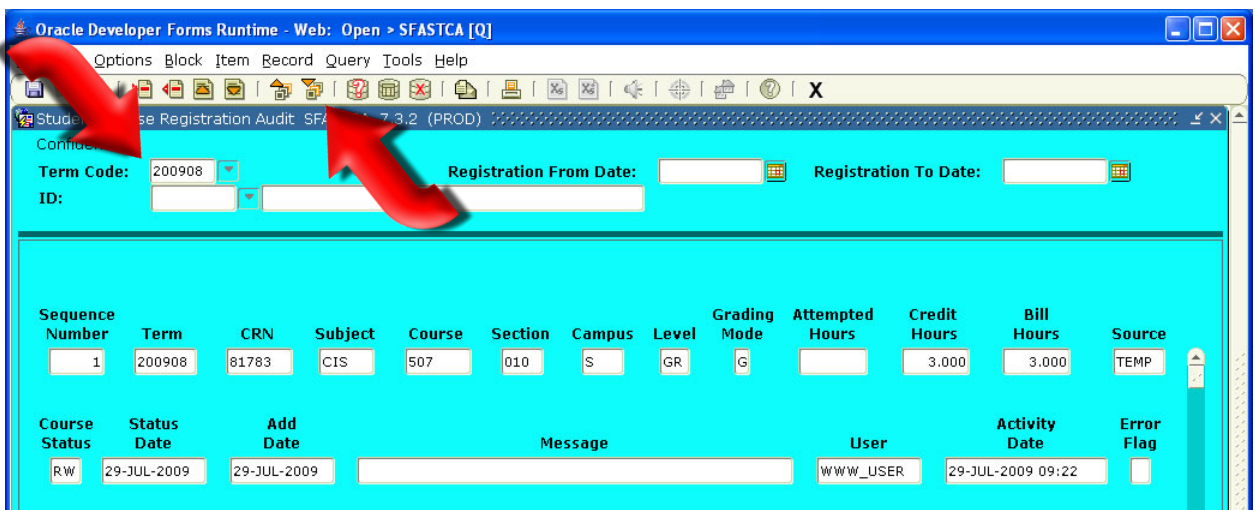
Step 1: Enter SFASTCA in the "Go To" field and press Enter.



Step 2: Enter the term in the "Term Code" field followed by the student's ID or SSN in the "ID" field and click on the "Next Block" icon.

Note: The "Term" field uses the following format - 4 digit year, 2 digit term. For ex: 200908 would be the year 2009 followed by the 08 (Fall) semester.

Semester codes: 01 = Spring
 06 = Summer
 08 = Fall



Note: If student's ID or SSN number is not available please refer to the note on Page 2 of the SPAIDEN instruction sheet.

Step 3: Now you can view when a course was added or dropped and when it was done. You can also see who made the changes by looking at the "User" field.

WWW_USER denotes that the student made the changes. If a staff member makes any changes their name will appear in the "User" field.

The screenshot shows the Oracle Developer Forms Runtime interface for the 'SFASTCA' application. The form is titled 'Student Course Registration Audit'. It includes fields for 'Term Code' (200908), 'Registration From Date', and 'Registration To Date'. Below these is a table with columns: Sequence Number, Term, CRN, Subject, Course, Section, Campus, Level, Grading Mode, Attempted Hours, Credit Hours, Bill Hours, and Source. The first row contains: 1, 200908, 81783, CIS, 507, 010, S, GR, G, [blank], 3.000, 3.000, TEMP. Below this table is another table with columns: Course Status, Status Date, Add Date, Message, User, Activity Date, and Error Flag. The first row contains: RW, 29-JUL-2009, 29-JUL-2009, [blank], WWW_USER, 29-JUL-2009 09:22, [blank]. A red arrow points to the 'WWW_USER' value in the 'User' field.

Step 4: If you need to look up another student you can click on the "Rollback" icon and repeat the steps above or you can click on the Black X to exit the form.

This screenshot is identical to the one above, showing the same registration audit form. Two red arrows are added: one points to the 'Rollback' icon (a circular arrow) in the top toolbar, and the other points to the 'Black X' icon (a square with an X) in the top toolbar.