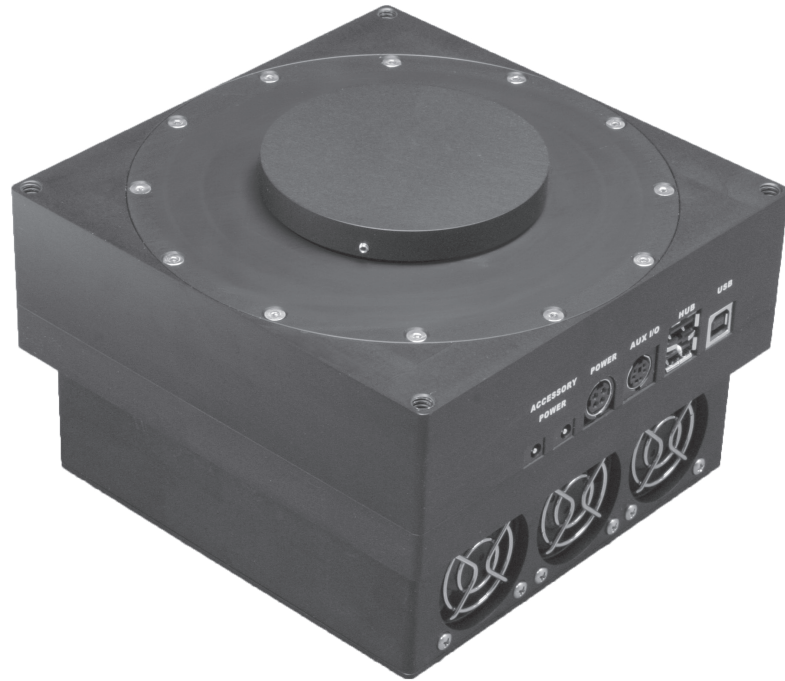


2048 x 2048 Imaging Array Size 13.5 μm Pixel Size

ProLine sets the standards in key performance areas that include: Download Speeds, Cooling, Low Noise Operation, Anti-Ghosting Technology, Image Quality, and Linearity. ProLine download speeds are fast while maintaining low-noise frame quality. ProLine achieves outstanding cooling without water assist. Simply set the ProLine cooling where you want it and the camera will do the rest – quickly and without worries. ProLine frame quality is second to none thanks to careful design, implementation and setup. All cameras are assembled in our clean room under exacting conditions and must pass a battery of tests before being shipped.



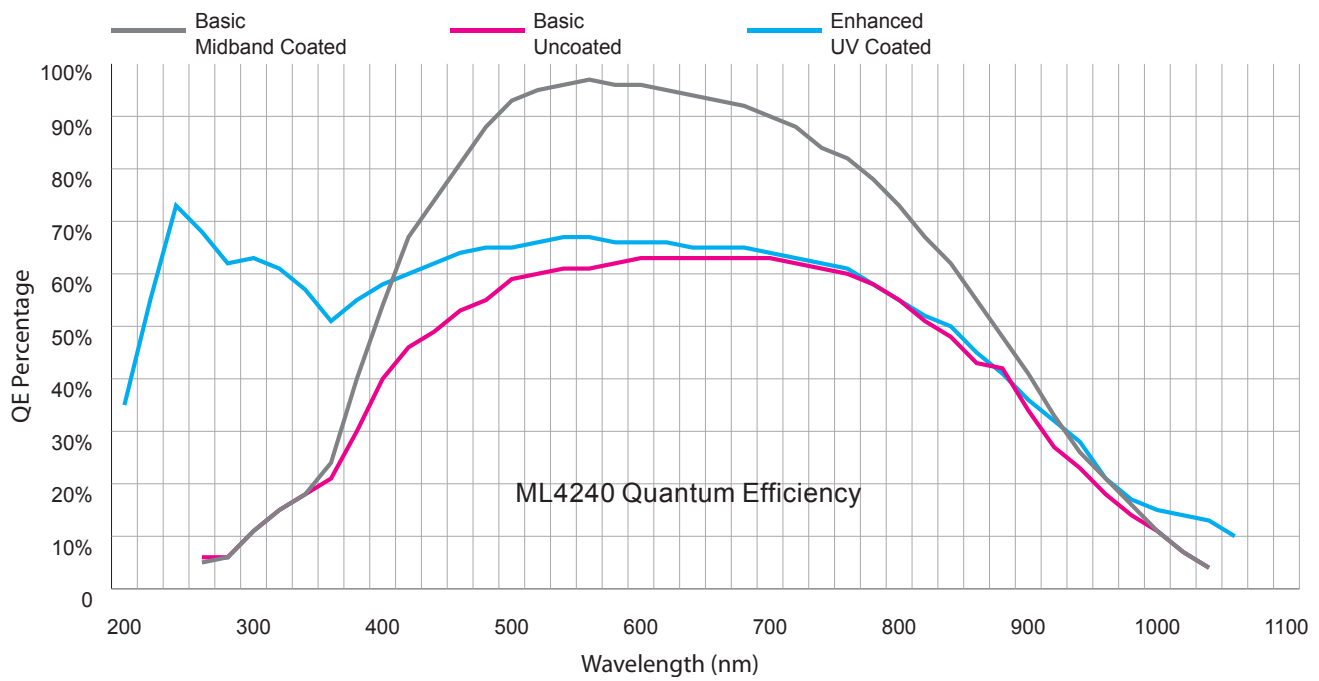
Applications

- | | |
|---------------------|-------------------------|
| Digital Radiography | Gel Documentation |
| Astronomy | Forensic Imaging |
| Bioluminescence | Satellite Imaging |
| Chemoluminescence | Low Light Level Imaging |

Features	Benefits
Up to 6 MHz Download Speed	Fast image capture with full 16-bit resolution
2048 x 2048 Array Size / 13.5 μm Pixel Size	Resolves fine detail
Flexible Binning and Readout	Increases frame rate
Thermoelectric Cooling to -65° C	Excellent low-noise imaging
Excellent Quantum Efficiency	High sensitivity for fast image acquisition
F-Mount Available	Offers a wide variety of optical choices
Acquisition Software	Supplied with camera and includes our open source SDK
USB 2.0 Interface	Industry standard connectivity, fast data transfer



Quality. Cooled. Cameras.



PL4240 Specifications	
Sensor	CCD42-40
Array Size	2048 x 2048
Pixel Size	13.5 μ m
Typical Minimum Cooling	-65° C Below Ambient
Typical Download Speed @ 16-bit	500 kHz (up to 6 MHz available)
Typical System Noise	8 e- RMS @ 500 kHz
Nonlinearity	<1%
Temperature Stability	0.1° C
Operating Environment	-30° C - 45° C 10% - 90% Relative Humidity
Sensor Manufacturer	E2V
CCD Grades Available	Standard
CCD Type	Front Illuminated / Back Illuminated
Color/Monochrome	Monochrome
Mega Pixels	4.2
Sensor Diagonal	39.1
Linear Full Well	100,000 e-
Typical Dark Current	0.2 e-/pixel/sec.
Anti Blooming	None
Available Shutters	65 mm
Shutter MTFB	1,000,000
Remote Triggering	Standard
Power	12v
Interface	USB 2.0
Dimensions	6.2 x 6.2 x 3.8 (157.48 x 157.48 x 96.52)

* Due to continuous development all specifications subject to change



Quality. Cooled. Cameras.

