

Tarleton University System Center – Central Texas
Spring Facts – 2003

“Serving Fort Hood, Killeen, and all of Central Texas with Pride,
Honor and Commitment.”



Compiled by:
The Office of Planning, Evaluation
and Institutional Research
Tarleton State University
Dr. Boyd Collier, Executive Director
Mr. Don Ross, Senior Research Associate
Ms. Freddie LeJeune, Administrative Assistant
Mr. Justin Cook, Graduate Assistant

CONTENTS

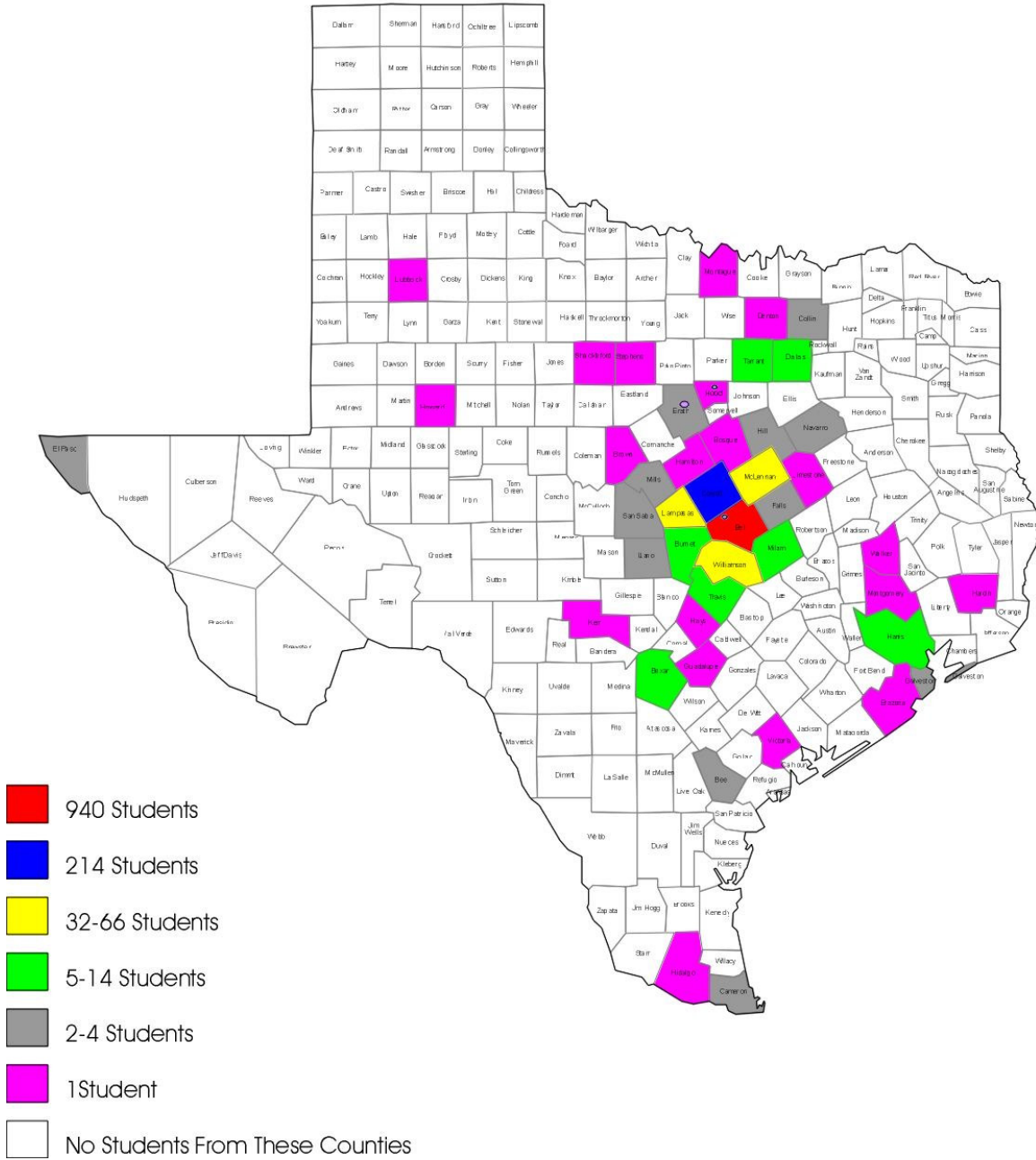
Spring 2003 Enrollment by Counties	3
Spring 2003 Enrollment by Counties (map)	5
Spring 2003 Enrollment by State and Country	6
Headcount by Geographical Location and Transfer College Type	7
Number of Students by College	8
Number of Students and Credit Hours by Major.....	9
Number of Credit Hours by College.....	11
Full-Time Equivalent Students by College	12
Part-Time/Full-Time Headcount by Gender and Status.....	13
Headcount by Gender, Ethnicity, and Status Spring 2003	14
Headcount by Age Spring 2003	15

County	FEM	MALE	SPRG 2002	FEM	MALE	SPRG 2003	LOSS OR GAIN FROM 2002 TO 2003
Atascosa	1	0	1				CNTY LOSS
Bastrop	0	1	1				CNTY LOSS
Bee				0	2	2	NEW CNTY GAIN
Bell	581	318	899	619	321	940	4.56%
Bexar	3	0	3	7	1	8	166.67%
Bosque	2	0	2	1	0	1	-50.00%
Brazoria	0	2	2	0	1	1	-50.00%
Brazos	1	1	2				CNTY LOSS
Brown	0	0	0	0	1	1	NEW CNTY GAIN
Burnet	8	1	9	12	2	14	55.56%
Cameron	0	1	1	1	1	2	100.00%
Collin	0	3	3	0	3	3	0.00%
Coryell	139	77	216	142	72	214	-0.93%
Dallas	4	1	5	5	1	6	20.00%
Denton	1	0	1	1	0	1	0.00%
El Paso	1	0	1	2	0	2	100.00%
Erath	1	0	1	3	0	3	200.00%
Falls				0	2	2	NEW CNTY GAIN
Fayette	1	0	1				CNTY LOSS
Fort Bend	0	1	1				CNTY LOSS
Galveston	1	0	1	2	0	2	100.00%
Gillespie	1	0	1				CNTY LOSS
Guadalupe				1	0	1	NEW CNTY GAIN
Hamilton	0	1	1	0	1	1	0.00%
Hardin				0	1	1	NEW CNTY GAIN
Harris	1	8	9	2	3	5	-44.44%
Haskell	3	0	3				CNTY LOSS
Hays				0	1	1	NEW CNTY GAIN
Hidalgo	1	0	1	1	0	1	0.00%
Hill	2	0	2	2	0	2	0.00%
Hood	0	1	1	1	0	1	0.00%
Howard	0	1	1	0	1	1	0.00%
Jefferson	1	0	1				CNTY LOSS
Kerr				1	0	1	NEW CNTY GAIN
Lampasas	36	21	57	38	21	59	3.51%
Limestone	0	1	1	1	0	1	0.00%
Llano	2	0	2	2	1	3	50.00%
Lubbock	0	1	1	0	1	1	0.00%
McLennan	37	27	64	43	23	66	3.13%
Milam	3	0	3	6	0	6	100.00%
Mills	0	2	2	2	2	4	100.00%
Montague	0	1	1	0	1	1	0.00%
Montgomery	0	1	1	0	1	1	0.00%
Navarro				1	1	2	NEW CNTY GAIN
Robertson	1	0	1				CNTY LOSS
San Saba	3	2	5	2	2	4	-20.00%
Shackelford	1	0	1	1	0	1	0.00%
Stephens				1	0	1	NEW CNTY GAIN
Tarrant	5	5	10	4	2	6	-40.00%
Tom Green	0	1	1				CNTY LOSS

Travis	2	4	6	2	8	10	66.67%
Victoria	1	0	1	1	0	1	0.00%
Walker				0	1	1	NEW CNTY GAIN
Washington	0	1	1				CNTY LOSS
Webb	0	1	1				CNTY LOSS
Williamson	23	14	37	19	13	32	-13.51%
Count=====>	867	499	1366	926	491	1417	3.73%

Tarleton University System Center - Central Texas

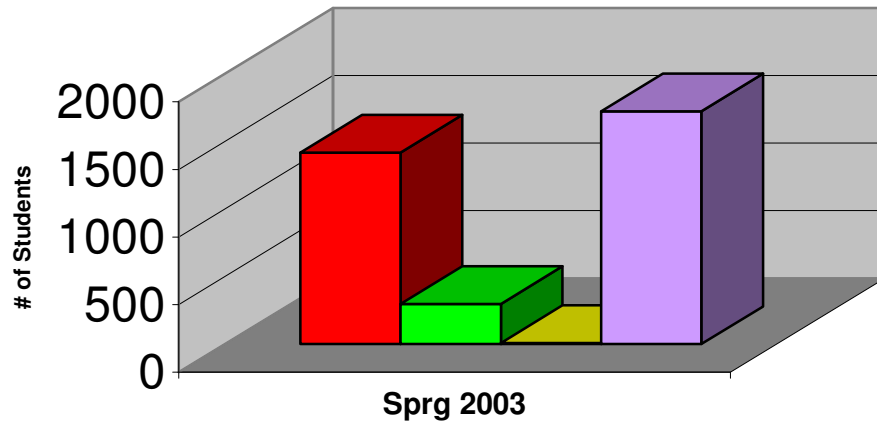
SPRING 2003 Enrollment By Counties



Out of State Students	Female	Male	Count
Alabama	8	0	8
Alaska	4	1	5
American Samoa	0	1	1
Arizona	6	1	7
Arkansas	3	3	6
California	14	6	20
Colorado	1	1	2
Connecticut	1	1	2
Florida	10	9	19
Georgia	12	2	14
Guam	1	1	2
Hawaii	1	0	1
Idaho	2	2	4
Iowa	2	0	2
Illinois	7	5	12
Indiana	4	0	4
Kansas	0	2	2
Kentucky	2	1	3
Louisiana	7	5	12
Maine	1	0	1
Maryland	6	0	6
Massachusetts	4	9	13
Michigan	5	2	7
Minnesota	0	1	1
Mississippi	6	3	9
Missouri	5	3	8
Montana	2	0	2
Nebraska	1	0	1
Nevada	3	2	5
New Hampshire	0	1	1
New Jersey	1	0	1
New York	15	10	25
North Carolina	10	4	14
North Dakota	1	1	2
Ohio	7	6	13
Oklahoma	6	2	8
Oregon	1	3	4
Pennsylvania	6	4	10
Puerto Rico	2	3	5
Rhode Island	2	0	2
South Carolina	0	1	1
Tennessee	6	4	10
Virginia	3	4	7
Washington	8	1	9
West Virginia	2	0	2
Wisconsin	2	0	2
Wyoming	2	0	2
Count=====>	192	105	297

Out of Country	Female	Male	Count
Bangladesh	0	1	1
Columbia	0	1	1
Japan	1	0	1
Korea	0	1	1
Pakistan	0	2	2
Panama	1	0	1
Uganda	0	1	1
Count=====>	2	6	8

Student Headcount by Geographical Origins



■ In State
 ■ Out of State
 ■ International
 ■ Total Headcount

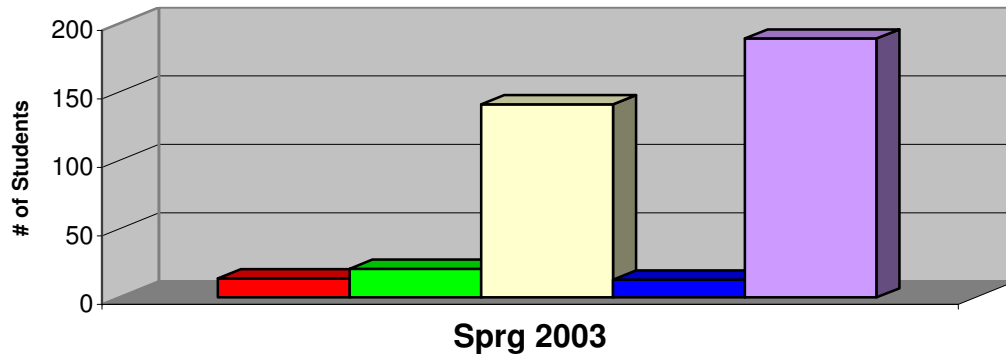
Student Headcount by Geographical Origins

Semester	In State	Out of State	International	Total Headcount
Sprg 2003	1417	297	8	1722

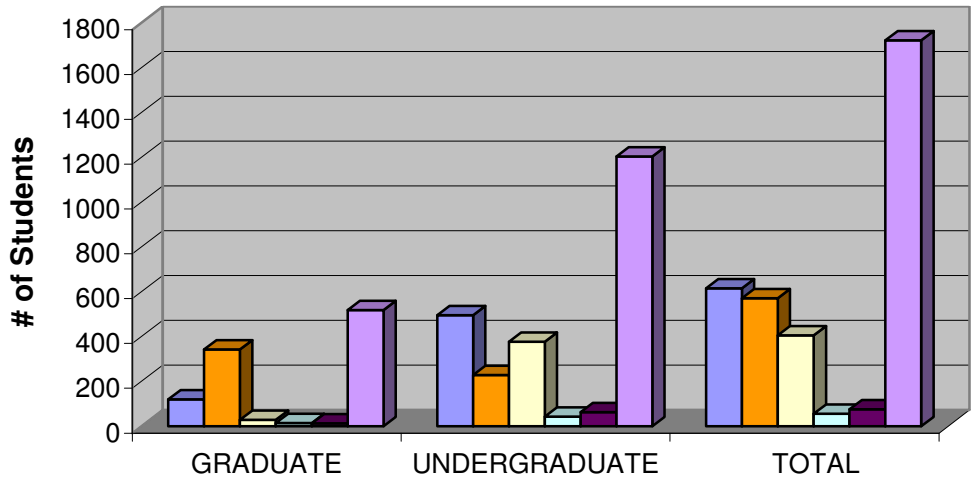
Student Headcount by Transfer College Type

Semester	In State Sr. College	Out of State Sr. College	In State Jr. College	Out of State Jr. College	Total Transfers
Sprg 2003	14	21	141	13	189

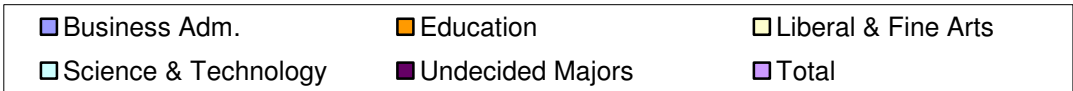
Student Headcount by Transfer College Type



■ In State Sr. College
 ■ Out of State Sr. College
 ■ In State Jr. College
■ Out of State Jr. College
 ■ Total Transfers



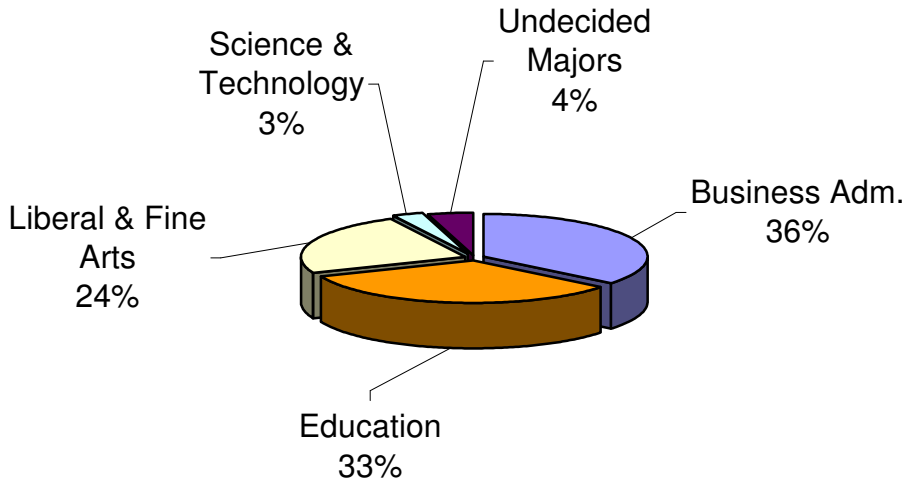
Spring 2003 Semester



Headcount of Students by College

	Agriculture & Human Sci.	Business Adm.	Education	Liberal & Fine Arts	Science & Technology	Undecided Majors	Total
GRADUATE	0	120	343	28	14	13	518
UNDERGRADUATE	0	495	228	377	42	62	1204
TOTAL	0	615	571	405	56	75	1722

2003 Spring Headcount By College



**UNDERGRADUATE
SEM CREDIT HRS**

**COLLEGE OF BUSINESS
ADM.**

	NUM	SCH
Accounting	54	447
Administrative Systems	1	3
Applied Science	3	12
Business Administration	137	1016
Business Occupations	7	49
Computer Information Systems	135	1056
Computer Science	25	184
Human Resources Management	52	285
Interdisciplinary Business Management	15	94
Marketing	27	180
	15	135
College Total	471	3461

COLLEGE OF EDUCATION

Interdisciplinary Studies	125	1244
Psychology	104	841
College Total	229	2085

**COLLEGE OF LIBERAL &
FINE ARTS**

Applied Science	35	192
Criminal Justice	54	388
English	1	10
History	58	395
Liberal Studies	48	228
Liberal Studies Bus Adm Emp.	9	89
Liberal Studies History Emp.	23	186
Liberal Studies Pol Sci Emp.	7	45
Liberal Studies Psy Emp.	19	151
Political Science	43	258
Social Work	80	757
College Total	377	2699

**COLLEGE OF SCIENCE &
TECHNOLOGY**

Aviation Management	7	48
Mathematics	12	108
Nursing	10	79
Professional Pilot	36	319
College Total	65	554

**GRADUATE SEM
CREDIT HRS**

**COLLEGE OF BUSINESS
ADM.**

	NUM	SCH
Accounting	1	3
Business Administration	43	231
Human Resources Management	35	201
Information Systems Management	33	208
	8	54
College Total	120	697

**COLLEGE OF
EDUCATION**

All Level Certification	1	6
Counseling	44	243
Counseling Psychology	79	613
Curriculum and Instruction	59	241
Educational Administration	116	594
Educational Psychology	16	108
Secondary Education	1	3
Superintendent Certification	3	12
Team Mate	24	78
College Total	343	1898

**COLLEGE OF LIBERAL
& FINE ARTS**

Criminal Justice	15	90
History	12	57
Liberal Studies	1	6
College Total	28	153

**COLLEGE OF SCIENCE
AND TECH.**

Mathematics	14	81
College Total	14	81

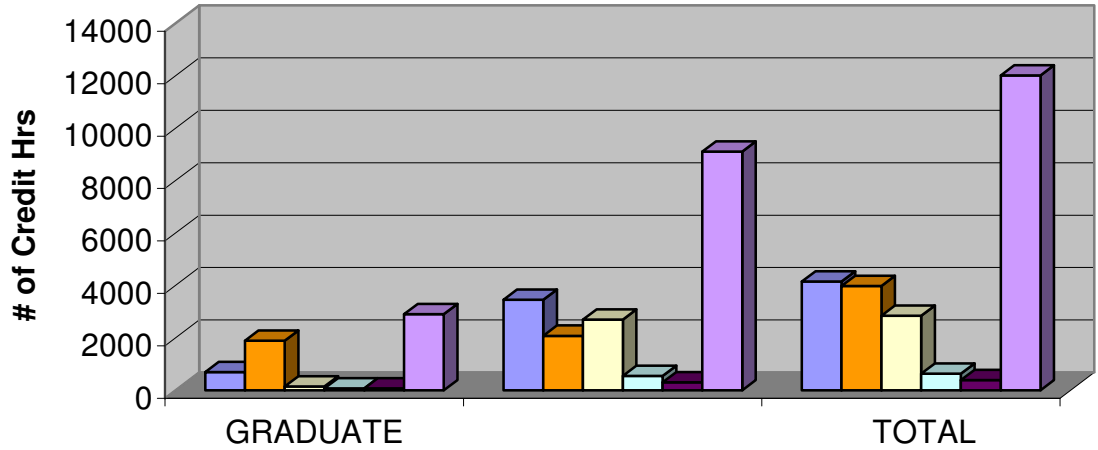
GRADUATE COLLEGE

Undecided	13	81
College Total	13	81

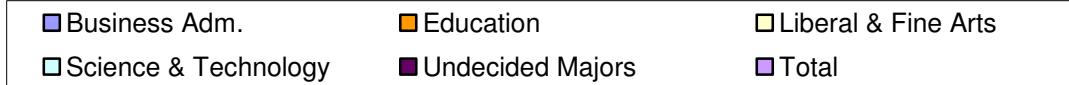
TCT TOTAL GD SCH 518 2910

DIVISION OF GENERAL STUDIES		
Undecided	62	309
Division Total	62	309
TCT TOTAL UG SCH-->	1204	9108

KILLEEN TOT GRAD	518	2910
KILLEEN TOT UNDER GD	1204	9108
TOTALS KILLEEN	1722	12018



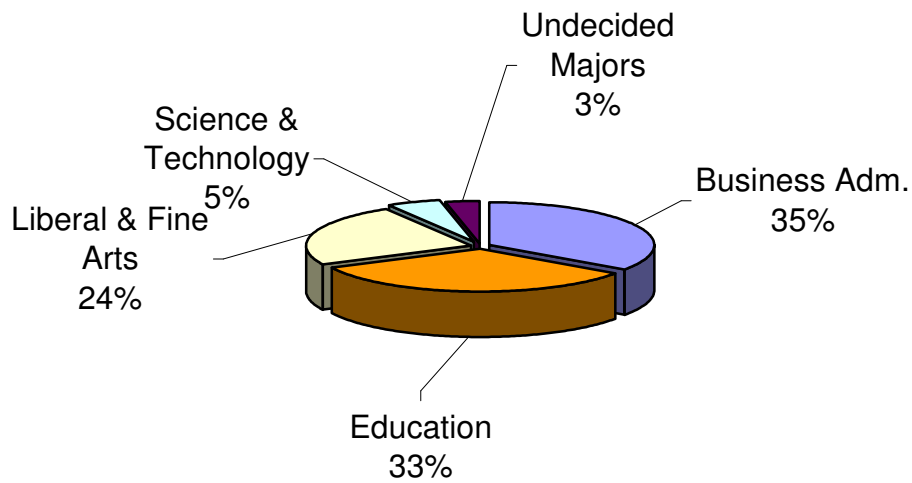
Spring 2003 Semester

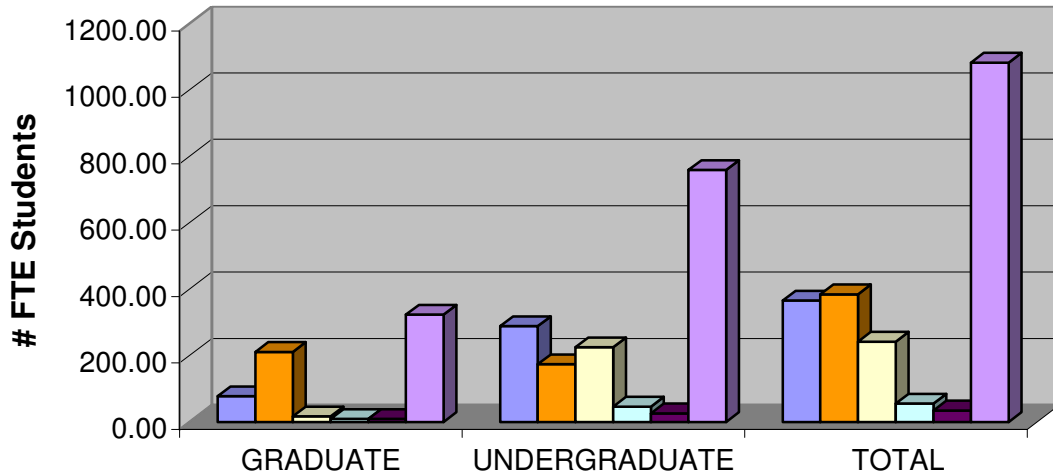


Semester Credit Hours by College

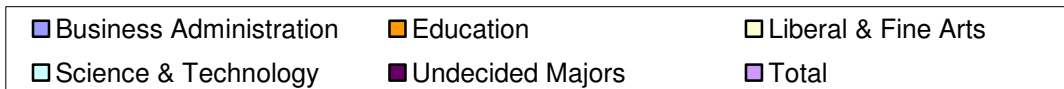
	Agriculture & Human Sci	Business Adm.	Education	Liberal & Fine Arts	Science & Technology	Undecided Majors	Total
GRADUATE	0	697	1898	153	81	81	2910
UNDERGRADUATE	0	3461	2085	2699	554	309	9108
TOTAL	0	4158	3983	2852	635	390	12018

Credit Hours By College





Spring 2003 Semester



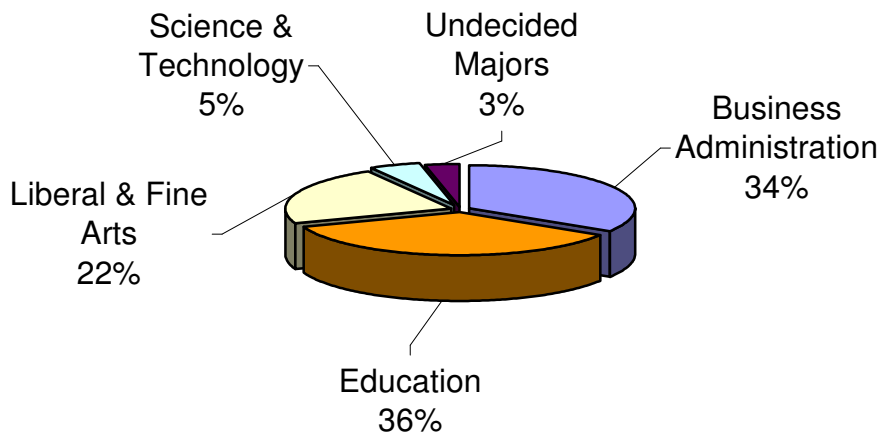
**Full-Time Equivalency by College

	Business Administration	Education	Liberal & Fine Arts	Science & Technology	Undecided Majors	Total
GRADUATE	77.44	210.89	17.00	9.00	9.00	323.33
UNDERGRADUATE	288.42	173.75	224.92	46.17	25.75	759.00
TOTAL	365.86	384.64	241.92	55.17	34.75	1082.33

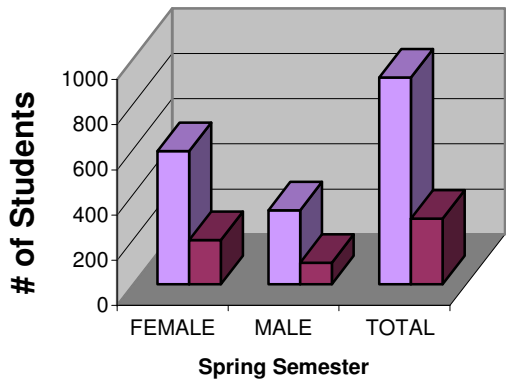
*Note: Tarleton University System Center created Fall 1999.

**Note: Full-time computed as 12 SCH for undergraduates and 9 SCH for graduates.

2003 Semester FTE By College

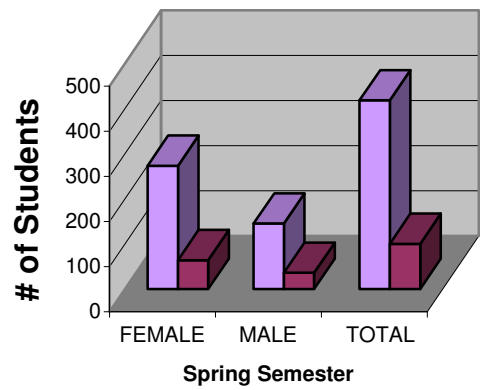


Undergraduate Part-Time/Full-Time



Legend: Part Time Ug (light purple), Full Time Ug (dark purple)

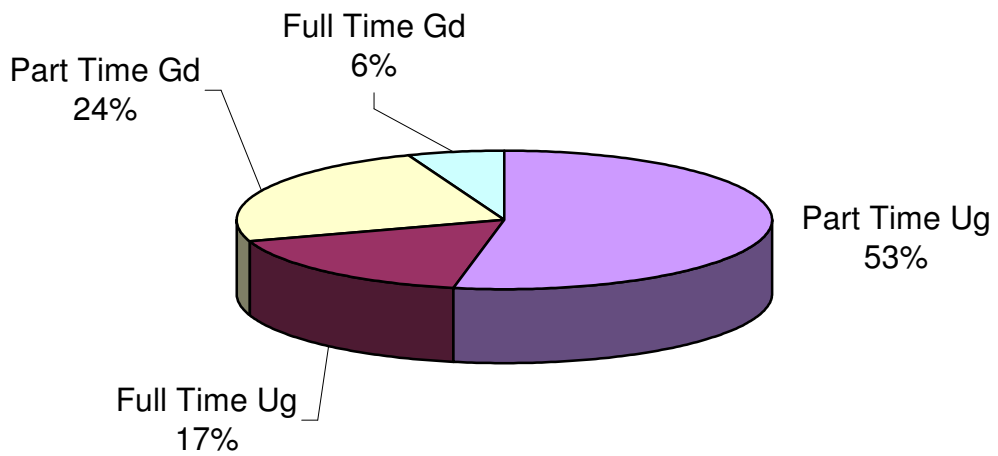
Graduate Part-Time/Full-Time



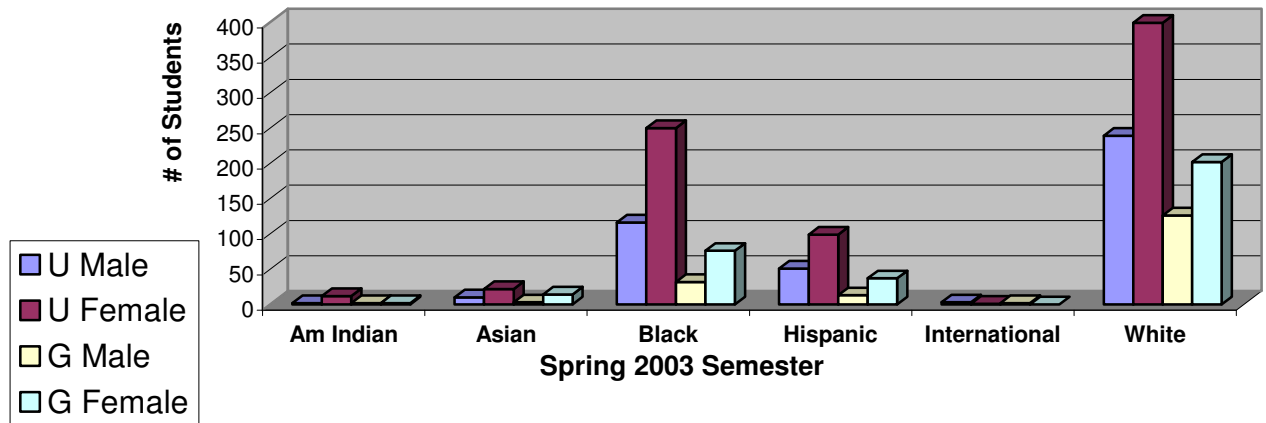
Legend: Part Time Gd (light purple), Full Time Gd (dark purple)

Gender	**Undergraduate		***Graduate		Total		Total Enrl
	Part Time Ug	Full Time Ug	Part Time Gd	Full Time Gd	Part Time	Full Time	
FEMALE	588	195	273	64	861	259	1120
MALE	326	95	145	36	471	131	602
TOTAL	914	290	418	100	1332	390	1722

2003 Spring Semester

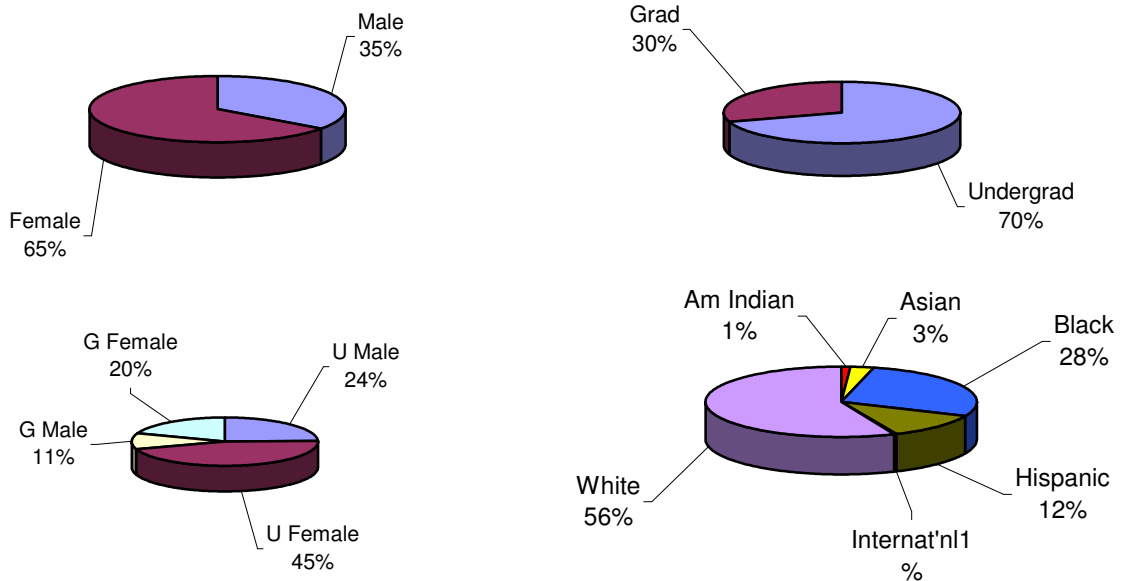


Headcount by Gender, Ethnicity, & Status

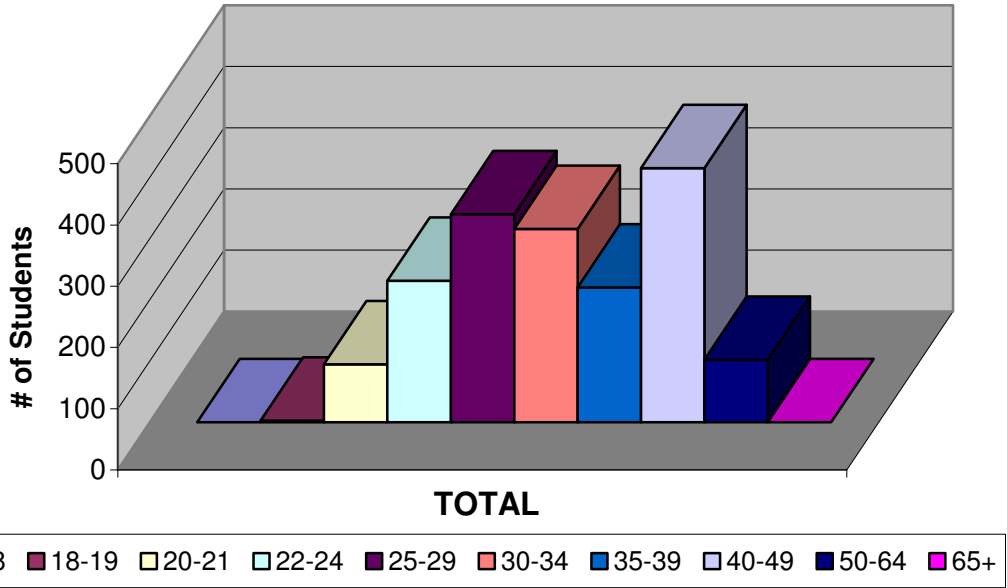


Ethnicity	Male	Female	Undergrad	Grad	U Male	U Female	G Male	G Female	Total
Am Indian	4	14	14	4	2	12	2	2	18
Asian	13	36	32	17	10	22	3	14	49
Black	148	326	366	108	116	250	32	76	474
Hispanic	64	136	150	50	51	99	13	37	200
International	5	1	4	2	3	1	2	0	6
White	365	601	638	328	239	399	126	202	966
Unknown	3	6	0	9	0	0	3	6	9
Total	602	1120	1204	518	421	783	181	337	1722

Spring 2003 Semester



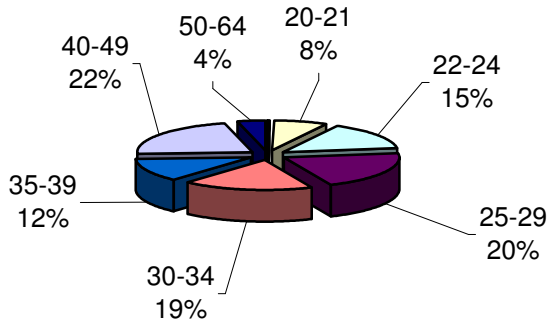
Age Distribution of Tarleton Central Texas Students



Headcount by Age

	<18	18-19	20-21	22-24	25-29	30-34	35-39	40-49	50-64	65+	Avg Age	total
UNDERGR	0	3	92	180	246	223	149	263	48	0	32.76	1204
GRAD	0	0	3	51	94	93	71	152	54	0	36.51	518
TOTAL	0	3	95	231	340	316	220	415	102	0	33.89	1722

Undergraduate Age Distribution



Graduate Age Distribution

