

Tarleton State University
System Center – Central Texas

SPRING 2004 FACTS

Uncertified Data Compiled 03-04-2004

Data is pending certification - minor changes may occur

Compiled by:
The Office of Planning, Evaluation and Institutional Research
Tarleton State University
Dr. Brad Chilton, Executive Director
Mr. Don Ross, Senior Research Associate
Ms. Freddie LeJeune, Administrative Assistant

CONTENTS

Spring 2004 Enrollment by Counties	1
Spring 2004 Enrollment by Counties (map)	3
Spring 2004 Enrollment by State and Country	4
Headcount by Geographical Location and Transfer College Type	5
Number of Students by College	6
Number of Students and Credit Hours by Major.....	7
Number of Credit Hours by College.....	8
Full-Time Equivalent Students by College	9
Part-Time/Full-Time Headcount by Gender and Status.....	10
Headcount by Gender, Ethnicity, and Status Spring 2004	11
Headcount by Age Spring 2004	12

**Tarleton University System Center – Central Texas
County Representation of Students Registered Through Killeen Campus
Spring 2004 Compared to Spring 2003**

County	FEM	MALE	SPRG 2003	FEM	MALE	SPRG 2004	LOSS OR GAIN FROM 2002 TO 2003
Austin				1		1	NEW CNTY GAIN
Bee	0	2	2			0	CNTY LOSS
Bell	619	321	940	676	356	1032	9.79%
Bexar	7	1	8			0	CNTY LOSS
Bosque	1	0	1	2	2	4	300.00%
Brazoria	0	1	1			0	CNTY LOSS
Brazos					1	1	NEW CNTY GAIN
Brown	0	1	1		1	1	0.00%
Burnet	12	2	14	9	5	14	0.00%
Cameron	1	1	2	3		3	50.00%
Collin	0	3	3		1	1	-66.67%
Coryell	142	72	214	172	86	258	20.56%
Cottle					1	1	NEW CNTY GAIN
Dallas	5	1	6	1		1	-83.33%
Denton	1	0	1	1		1	0.00%
Ector				1		1	NEW CNTY GAIN
El Paso	2	0	2	1		1	-50.00%
Erath	3	0	3	1		1	-66.67%
Falls	0	2	2	1	1	2	0.00%
Freestone				1		1	NEW CNTY GAIN
Galveston	2	0	2	1	3	4	100.00%
Gillespie				1	1	2	NEW CNTY GAIN
Gregg				1		1	NEW CNTY GAIN
Guadalupe	1	0	1	2		2	100.00%
Hale				1		1	NEW CNTY GAIN
Hamilton	0	1	1		2	2	100.00%
Hardin	0	1	1			0	CNTY LOSS
Harris	2	3	5	1	7	8	60.00%
Haskell				1		1	NEW CNTY GAIN
Hays	0	1	1		1	1	0.00%
Henderson				1		1	NEW CNTY GAIN
Hidalgo	1	0	1			0	CNTY LOSS
Hill	2	0	2	2		2	0.00%
Hood	1	0	1			0	CNTY LOSS
Howard	0	1	1		2	2	100.00%
Jefferson						0	NEW CNTY GAIN
Kaufman					1	1	NEW CNTY GAIN
Kerr	1	0	1			0	CNTY LOSS
Lampasas	38	21	59	46	22	68	15.25%
Limestone	1	0	1	3		3	200.00%
Live Oak					1	1	NEW CNTY GAIN
Llano	2	1	3	3	1	4	33.33%
Lubbock	0	1	1			0	CNTY LOSS
Marion					1	1	NEW CNTY GAIN
McCulloch					1	1	NEW CNTY GAIN
McLennan	43	23	66	60	35	95	43.94%
Midland				1	1	2	NEW CNTY GAIN
Milam	6	0	6	13	2	15	150.00%

Note: Counts include Flexible Entry Students from Fall 2003

**Tarleton University System Center – Central Texas
County Representation of Students Registered Through Killeen Campus
Spring 2004 Compared to Spring 2003**

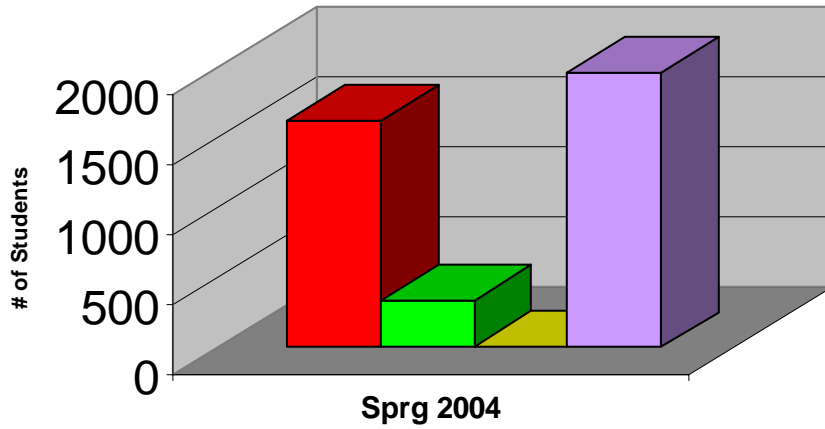
County	FEM	MALE	SPRG 2003	FEM	MALE	SPRG 2004	LOSS OR GAIN FROM 2002 TO 2003
Mills	2	2	4	1	1	2	-50.00%
Montague	0	1	1		1	1	0.00%
Montgomery	0	1	1			0	CNTY LOSS
Navarro	1	1	2	1	1	2	0.00%
Parker					2	2	NEW CNTY GAIN
Pecos				1		1	NEW CNTY GAIN
Randall				1		1	NEW CNTY GAIN
Robertson				1	1	2	NEW CNTY GAIN
San Saba	2	2	4	1	1	2	-50.00%
Scurry					1	1	NEW CNTY GAIN
Shackelford	1	0	1			0	CNTY LOSS
Somervell					1	1	NEW CNTY GAIN
Stephens	1	0	1			0	CNTY LOSS
Tarrant	4	2	6	2	3	5	-16.67%
Taylor				1		1	NEW CNTY GAIN
Tom Green					1	1	NEW CNTY GAIN
Travis	2	8	10	2	10	12	20.00%
Victoria	1	0	1		1	1	0.00%
Walker	0	1	1			0	CNTY LOSS
Washington						0	NEW CNTY GAIN
Webb						0	NEW CNTY GAIN
Wichita					1	1	NEW CNTY GAIN
Williamson	19	13	32	33	20	53	65.63%
Count=====>	926	491	1417	1051	580	1631	15.10%

Tarleton University System Center – Central Texas
SPRING 2004 Enrollments By State and Country

Out of State Students	Female	Male	Count	Out of Country	Female	Male
Alabama	22	2	24	Brazil	0	2
Alaska	7	4	11	New Zealand	0	1
American Samoa		1	1	Pakistan	0	2
Arizona	8	1	9	Panama	1	0
Arkansas	1		1	South Korea	0	2
California	22	5	27	Uganda	0	1
Colorado	4		4	Count=====>	1	8
Connecticut	1		1			
Deleware		1	1			
Florida	17	6	23			
Georgia	11	3	14			
Guam	2	1	3			
Hawaii	2		2			
Idaho	1		1			
Illinois	8	3	11			
Indiana	7	1	8			
Kansas	4		4			
Kentucky	3		3			
Louisiana	13	5	18			
Maine	2		2			
Maryland	4		4			
Massachusetts	6	3	9			
Michigan	9	5	14			
Minnesota	1	2	3			
Mississippi	3	2	5			
Missouri	6	1	7			
Montana	2		2			
Nebraska	3	2	5			
Nevada	1		1			
New Hampshire		2	2			
New Jersey	4	1	5			
New Mexico		2	2			
New York	14	11	25			
North Carolina	9	4	13			
North Dakota		1	1			
Ohio	1	3	4			
Oklahoma	5	2	7			
Oregon	1	1	2			
Pennsylvania	6	7	13			
Puerto Rico	4	4	8			
Rhode Island	1		1			
South Carolina	5		5			
South Dakota	1		1			
Tennessee	5	6	11			
Vermont		2	2			
Virginia	6	3	9			
Washington	3	1	4			
West Virginia	1	1	2			
Wisconsin	4		4			
Wyoming	1		1			
Count=====>	241	99	340			

**Tarleton University System Center – Central Texas
Headcount by Geographical Location and Transfer College Type SPRING 2004**

Student Headcount by Geographical Origins



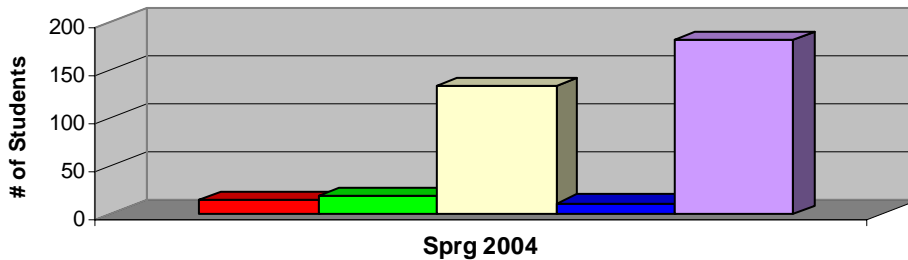
■ In State
 ■ Out of State
 ■ International
 ■ Total Headcount

Student Headcount by Geographical Origins

Semester	In State	Out of State	International	Total Headcount
Sprg 2004	1631	340	9	1980

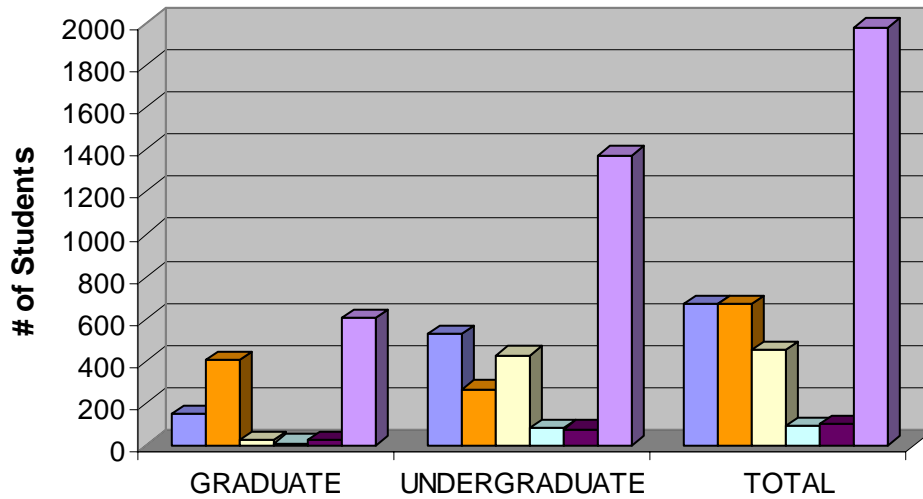
Student Headcount by Transfer College Type

Semester	In State Sr. College	Out of State Sr. College	In State Jr. College	Out of State Jr. College	Total Transfers
Sprg 2004	16	19	133	12	180

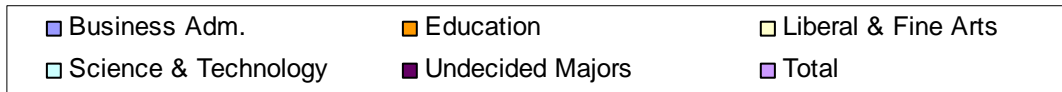


■ In State Sr. College
 ■ Out of State Sr. College
 ■ In State Jr. College
■ Out of State Jr. College
 ■ Total Transfers

**Tarleton University System Center – Central Texas
Number of Students by College SPRING 2004**



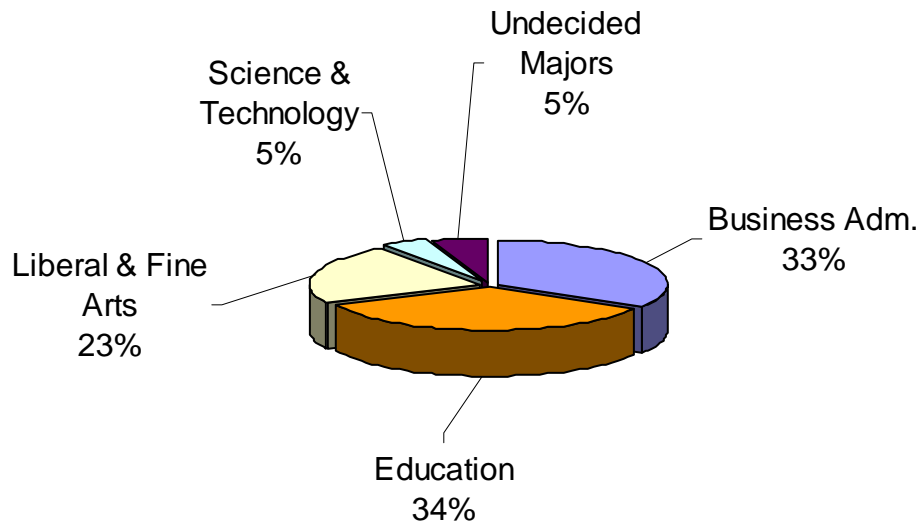
Spring 2004 Semester



Headcount of Students by College of Major

	Agriculture & Human Sci.	Business Adm.	Education	Liberal & Fine Arts	Science & Technology	Undecided Majors	Total
GRADUATE	0	146	402	22	9	25	604
UNDERGRADUATE	1	525	266	426	81	77	1376
TOTAL	1	671	668	448	90	102	1980

2004 Spring Headcount By College



Tarleton University System Center – Central Texas
Semester Credit Hours by Major SPRING 2004

UNDERGRADUATE SEM CREDIT HRS

COLLEGE OF AGRI. & HUM. SCI.

	NUM	SCH
Agricultural Services & Development	1	6
College Total	1	6

COLLEGE OF BUSINESS ADM.

	NUM	SCH
Accounting	67	497
Administrative Systems	3	18
Business Administration	158	1048
Business Occupations	6	45
Computer Information Systems	167	1319
Computer Science	11	54
Human Resources Management	44	300
Interdisciplinary Business Management	11	69
Management	40	279
Marketing	18	183
College Total	525	3812

COLLEGE OF EDUCATION

Interdisciplinary Studies	151	1356
Psychology	115	838
College Total	266	2194

COLLEGE OF LIBERAL & FINE ARTS

Criminal Justice	47	360
History	66	480
Liberal Studies	71	388
Liberal Studies Bus Adm Emp.	10	78
Liberal Studies Crim. Just. Emp.	2	12
Liberal Studies History Emp.	32	222
Liberal Studies Pol Sci Emp.	5	36
Liberal Studies Psy Emp.	20	181
Political Science	52	376
Social Work	87	870
Sociology	6	45
College Total	398	3048

COLLEGE OF SCIENCE & TECHNOLOGY

Aviation Management	9	51
Industrial Technology	1	9
Mathematics	12	90
Nursing	2	27
Professional Pilot	57	495
College Total	81	672

DIVISION OF GENERAL STUDIES

Applied Science	28	188
Undecided	77	408
Division Total	105	596

TCT TOTAL UG SCH--> 1376 10328

GRADUATE SEM CREDIT HRS

COLLEGE OF BUSINESS ADM.

	NUM	SCH
Business Administration	59	360
Human Resources Management	37	228
Information Systems Management	31	204
Management	19	120
College Total	146	912

COLLEGE OF EDUCATION

Counseling	55	321
Counseling Psychology	78	618
Curriculum and Instruction	72	287
Educational Administration	148	712
Educational Psychology	15	111
Superintendent Certification	1	3
Team Mate	33	114
College Total	402	2166

COLLEGE OF LIBERAL & FINE ARTS

Criminal Justice	10	54
History	12	69
College Total	22	123

COLLEGE OF SCIENCE & TECHNOLOGY

Mathematics	9	51
College Total	9	51

GRADUATE COLLEGE

Undecided	25	120
College Total	25	120

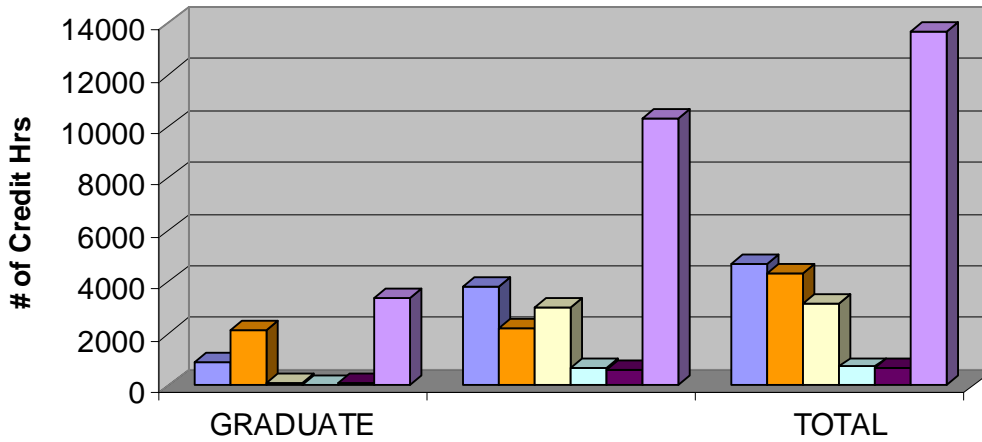
TCT TOTAL GD SCH 604 3372

KILLEEN TOT GRAD 604 3372

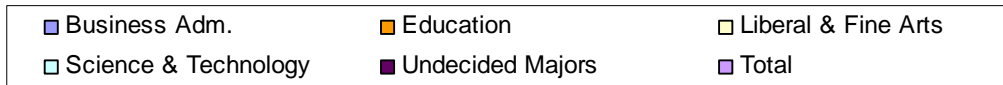
KILLEEN TOT UNDER GD 1376 10328

TOTALS KILLEEN 1980 13700

**Tarleton University System Center – Central Texas
Number of Credit Hours by College SPRING 2004**



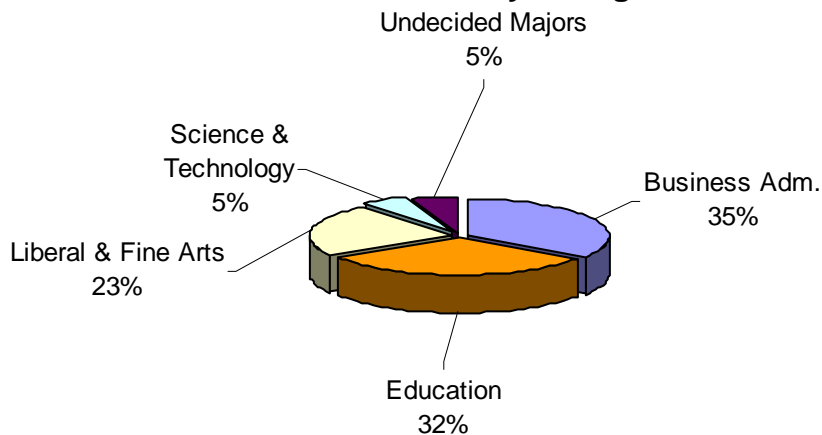
Spring 2004 Semester



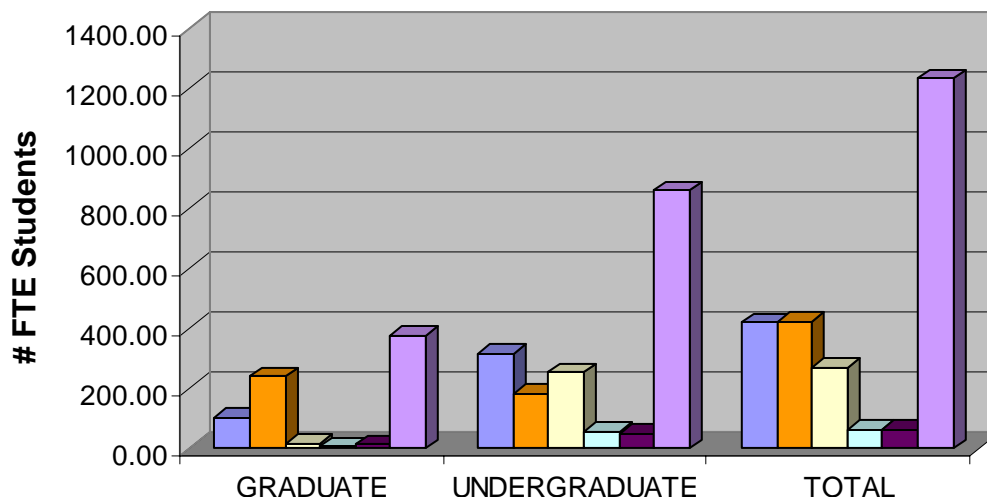
Semester Credit Hours by College

	Agriculture & Human Sci	Business Adm.	Education	Liberal & Fine Arts	Science & Technology	Undecided Majors	Total
GRADUATE	0	912	2166	123	51	120	3372
UNDERGRADUATE	6	3812	2194	3048	672	596	10328
TOTAL	6	4724	4360	3171	723	716	13700

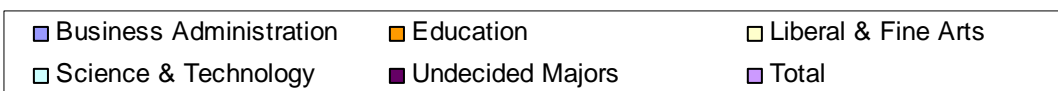
Credit Hours By College



**Tarleton University System Center – Central Texas
Full-Time Equivalent Students by College SPRING 2004**



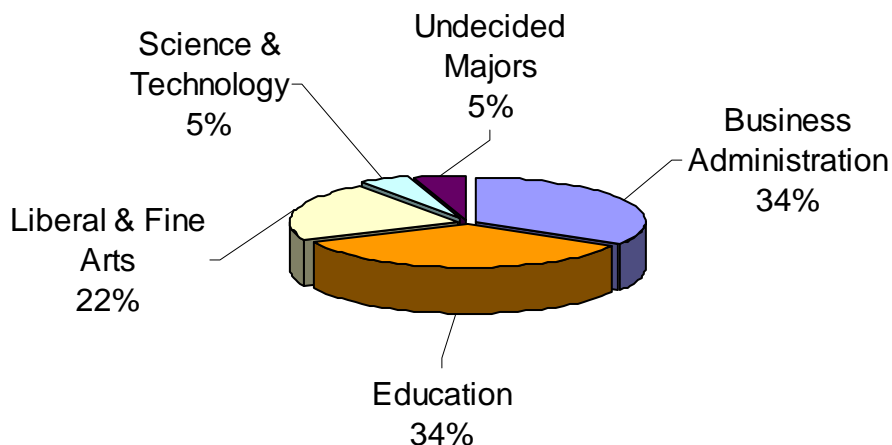
Spring 2004 Semester



****Full-Time Equivalency by College**

	Agriculture & Hyuman Sci	Business Administration	Education	Liberal & Fine Arts	Science & Technology	Undecide d Majors	Total
GRADUATE	0	101.33	240.67	13.67	5.67	13.33	374.67
UNDERGRADUATE	0.5	317.67	182.83	254.00	56.00	49.67	860.67
TOTAL	0.5	419.00	423.50	267.67	61.67	63.00	1235.34

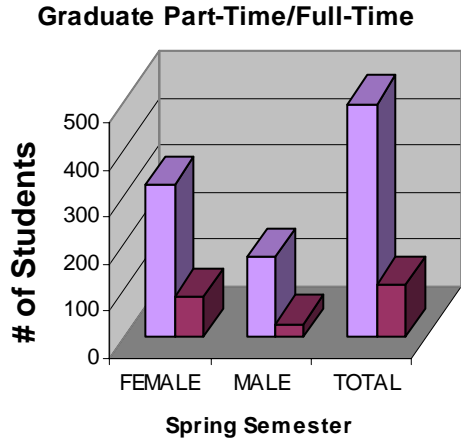
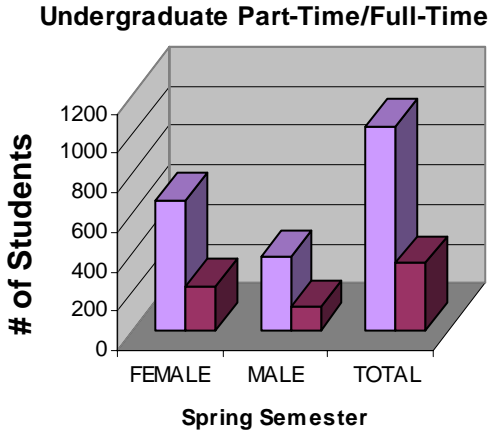
2004 Semester FTE By College



*Note: Tarleton University System Center created Fall 1999

**Note: Full-Time computed as 12 SCH for undergraduates and 9 SCH for graduates.

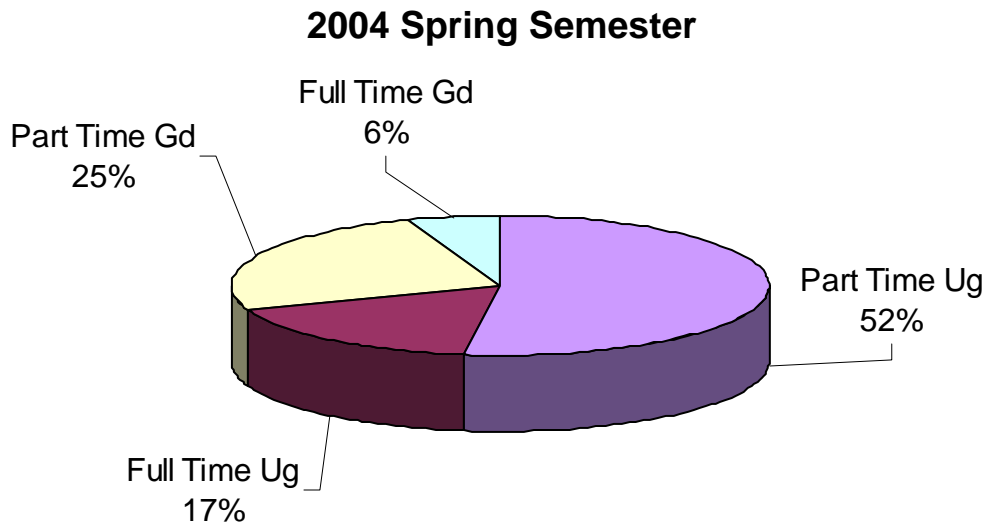
**Tarleton University System Center – Central Texas
Part-Time/Full-Time Headcount by Gender and Status SPRING 2004**



Legend: Part Time Ug (light purple), Full Time Ug (dark purple)

Legend: Part Time Gd (light purple), Full Time Gd (dark purple)

Gender	**Undergraduate		***Graduate		Total		Total Enrl
	Part Time Ug	Full Time Ug	Part Time Gd	Full Time Gd	Part Time	Full Time	
FEMALE	663	223	323	84	986	307	1293
MALE	372	118	170	27	542	145	687
TOTAL	1035	341	493	111	1528	452	1980



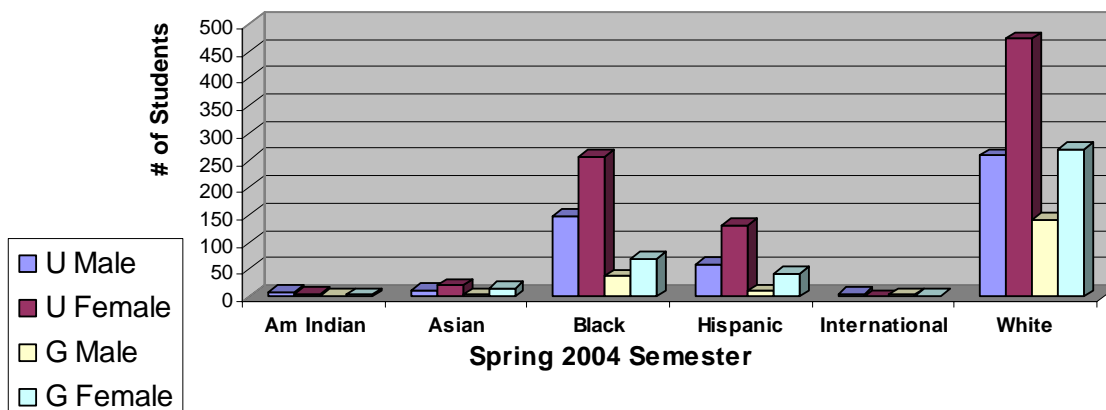
*Note: Tarleton University System Center created Fall 1999

**Note: Undergraduate Full-Time = 12 or more semester credit hours.

***Note: Graduate Full-time = 9 or more semester credit hours.

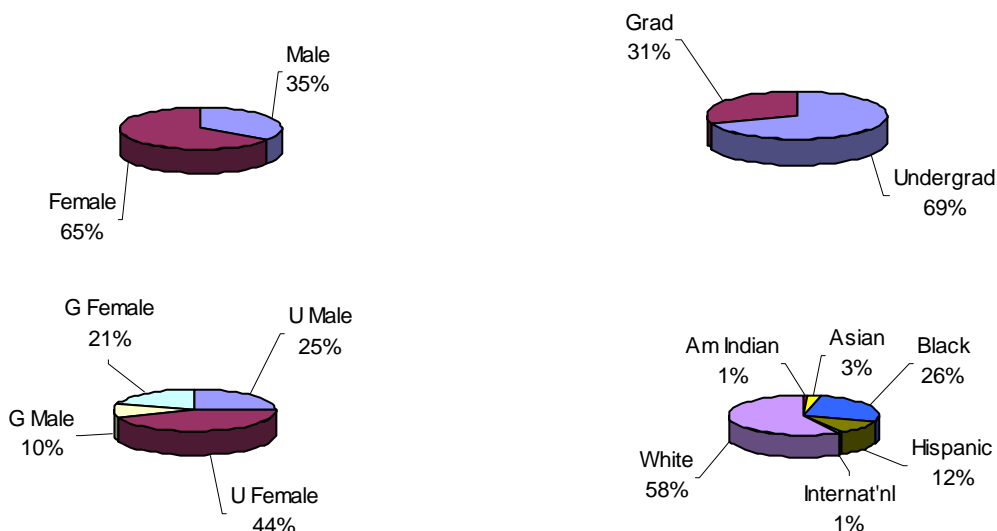
Tarleton University System Center – Central Texas Headcount by Gender, Ethnicity, and Status SPRING 2004

Headcount by Gender, Ethnicity, & Status

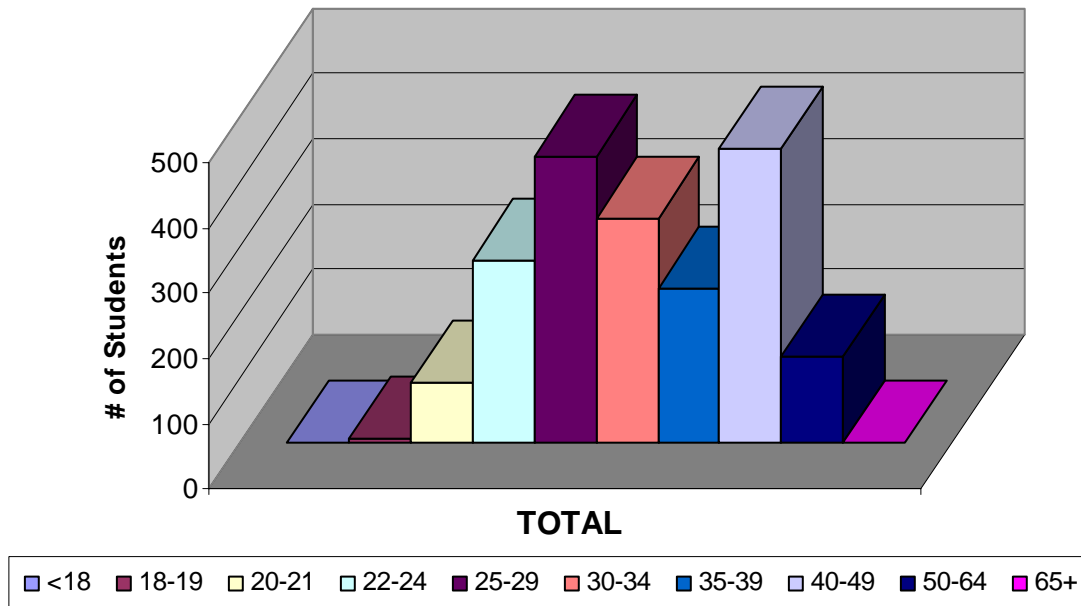


Ethnicity	Male	Female	Undergrad	Grad	U Male	U Female	G Male	G Female	Total
Am Indian	9	9	14	4	8	6	1	3	18
Asian	16	35	32	19	12	20	4	15	51
Black	185	326	405	106	148	257	37	69	511
Hispanic	69	173	189	53	59	130	10	43	242
International	8	1	5	4	5	0	3	1	9
White	399	744	731	412	258	473	141	271	1143
Unknown	1	5	0	6	0	0	1	5	6
Total	687	1293	1376	604	490	886	197	407	1980

Spring 2004 Semester



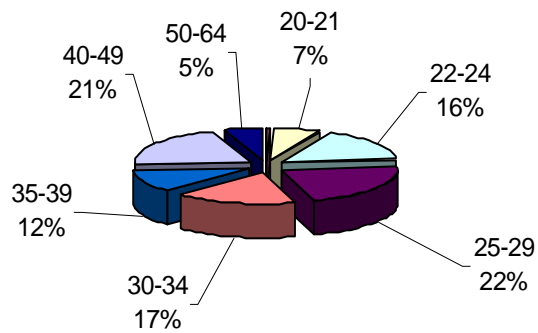
Tarleton University System Center – Central Texas Headcount by Age SPRING 2004



Headcount by Age

	<18	18-19	20-21	22-24	25-29	30-34	35-39	40-49	50-64	65+	Avg Age	total
UNDERGR	0	6	92	222	308	231	162	284	71	0	32.76	1376
GRAD	0	0	1	58	129	113	75	167	61	0	36.19	604
TOTAL	0	6	93	280	437	344	237	451	132	0	33.81	1980

Undergraduate Age Distribution



Graduate Age Distribution

