

BIOLOGY 306 COMPARATIVE VERTEBRATE ANATOMY

LAB # 5

Skeletal Systems: Amphibians, Reptiles, Birds

Quiz: bird skeleton (handout); turtle skeleton (handout)

I. SKELETAL SYSTEM: Class Amphibia (cont.)

B. Order Urodela

1. Necturus (Mudpuppy): Postcranial skeleton – learn structures as indicated in lab

II. SKELETAL SYSTEM: Class Reptilia

A. Subclass Anapsida, Order Testudines - Use handouts.

1. Turtle

Whole skeleton: names for #29 and #30 are reversed. Identify all bones.

Skull: learn all elements on handout.

B. Subclass Diapsida, Superorder Archosauria, Order Crocodylia - Use handout.

1. Alligator (Alligator): Skull and jaw

Two specimens of the alligator skull and lower jaw will be available for your examination. You are responsible for all of the bones on the appropriate diagrams.

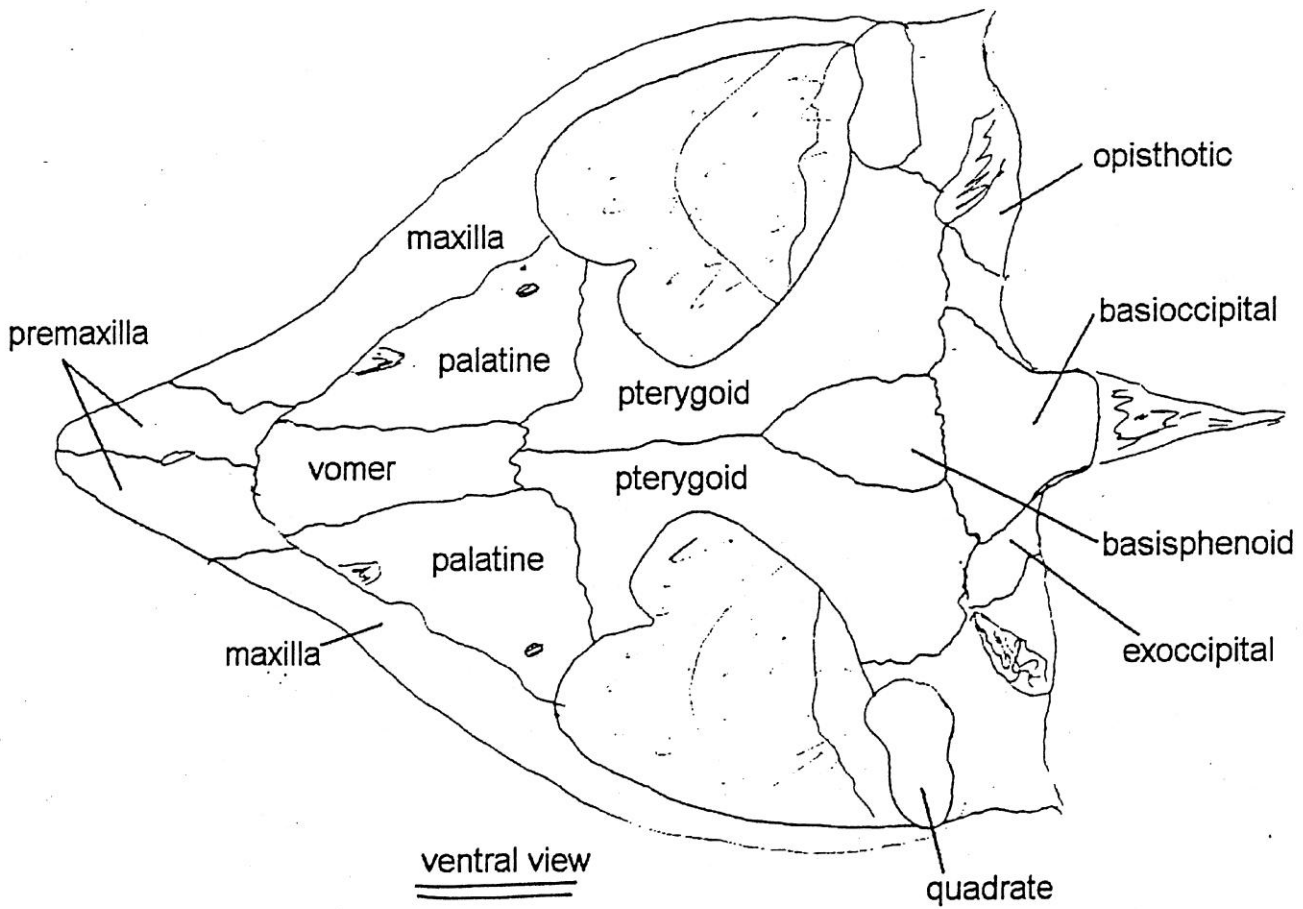
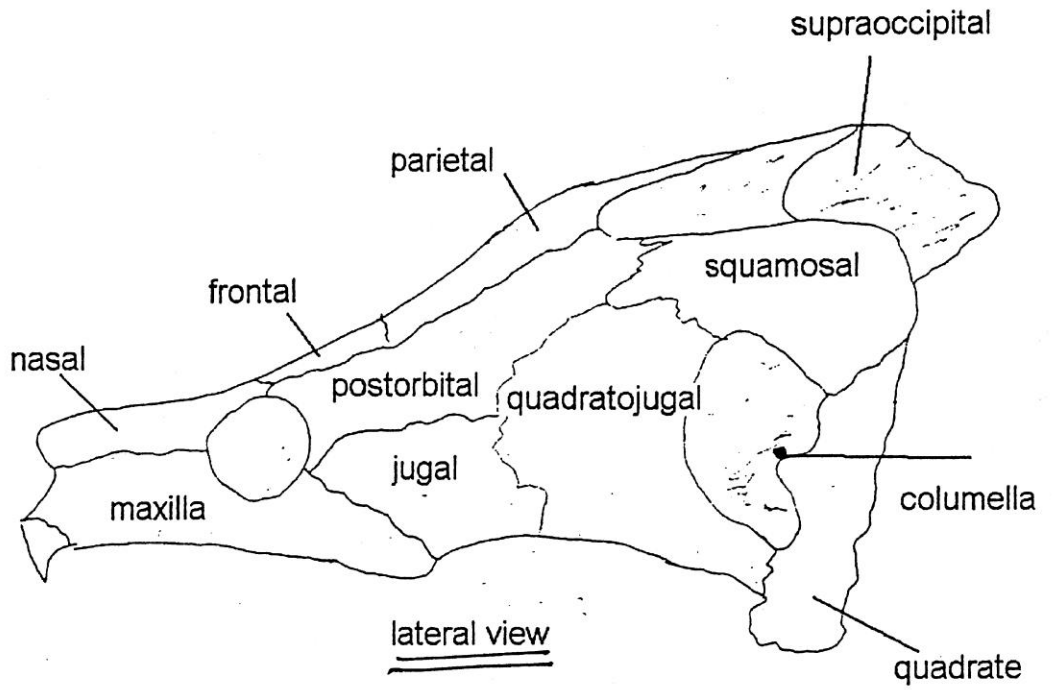
III. SKELETAL SYSTEM: Class Aves

A. Bird: Skull and postcranial skeleton - Use handouts.

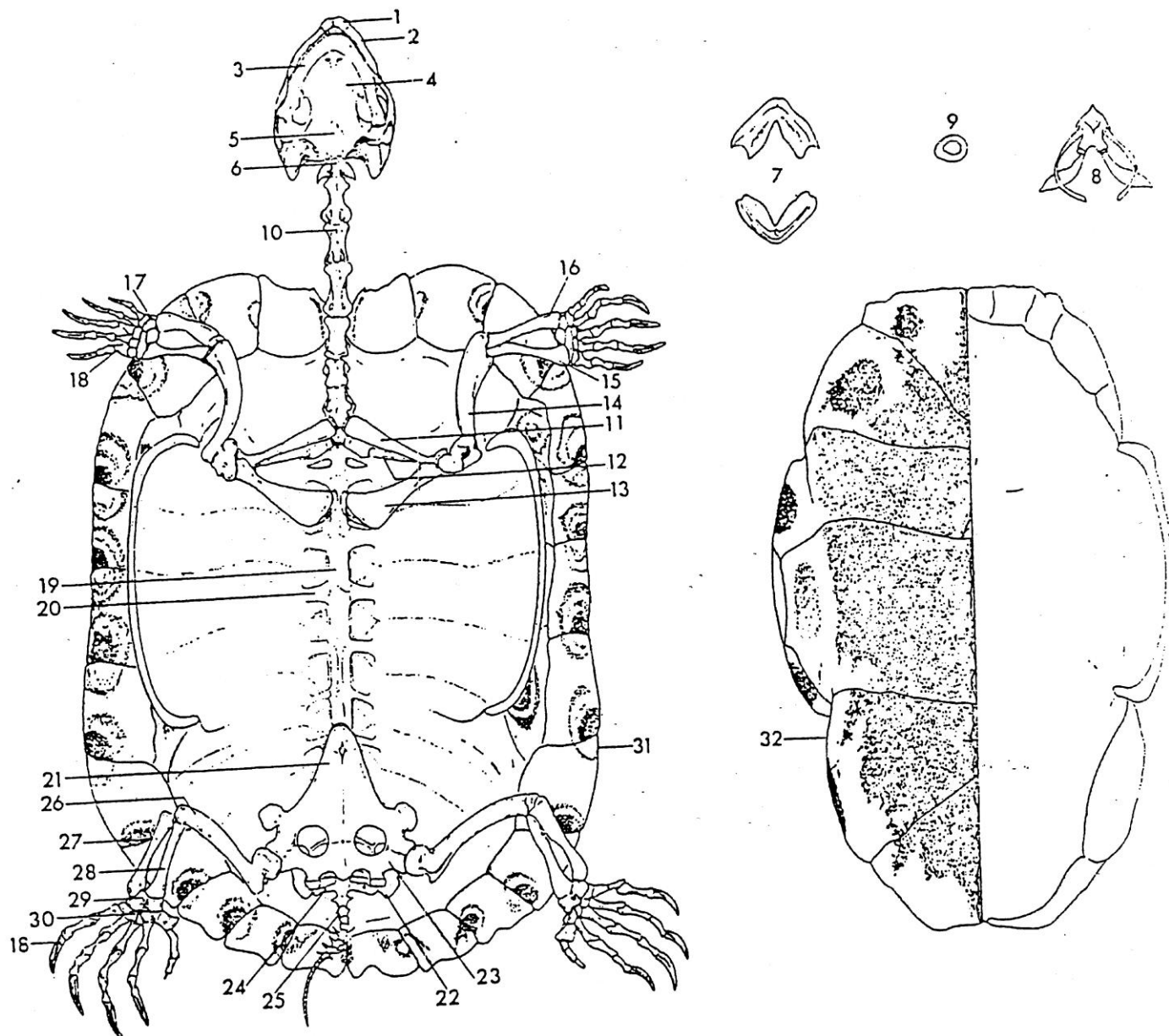
Examine the skulls and skeletons and identify the bones labeled in the appropriate diagrams.

NOTE: In birds, the left and right clavicle are fused to the interclavicle to form a single skeletal element called the **furcula**.

turtle skull



TURTLE SKELETON



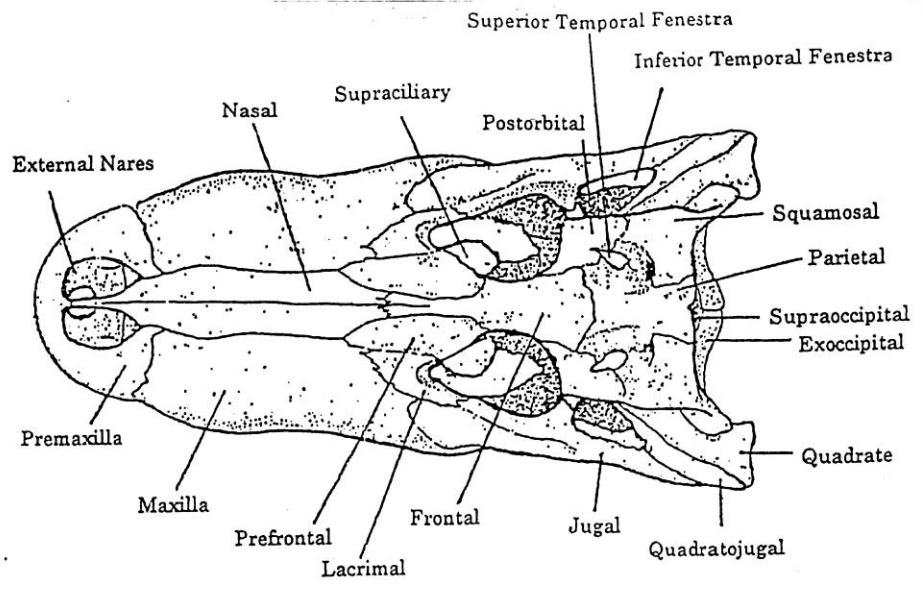
- | | |
|------------------------------|-----------------------------|
| 1. Premaxilla | 17. Carpals |
| 2. Maxilla | 18. Phalanges |
| 3. Mandible | 19. Dorsal vertebra (10) |
| 4. Pterygoid | 20. Rib |
| 5. Basisphenoid | 21. Pubis |
| 6. Basisoccipital | 22. Ilium |
| 7. Horny teeth | 23. Ischium |
| 8. Hyoid bones | 24. Sacral vertebra (2) |
| 9. Eye bone | 25. Caudal vertebra (20-30) |
| 10. Cervical vertebra (8) | 26. Femur |
| 11. Acromial process | 27. Tibia |
| 12. Scapula | 28. Fibula |
| 13. Coracoid | 29. Metatarsals |
| 14. Humerus | 30. Tarsals |
| 15. Radius | 31. Carapace |
| 16. Ulna | 32. Plastron |



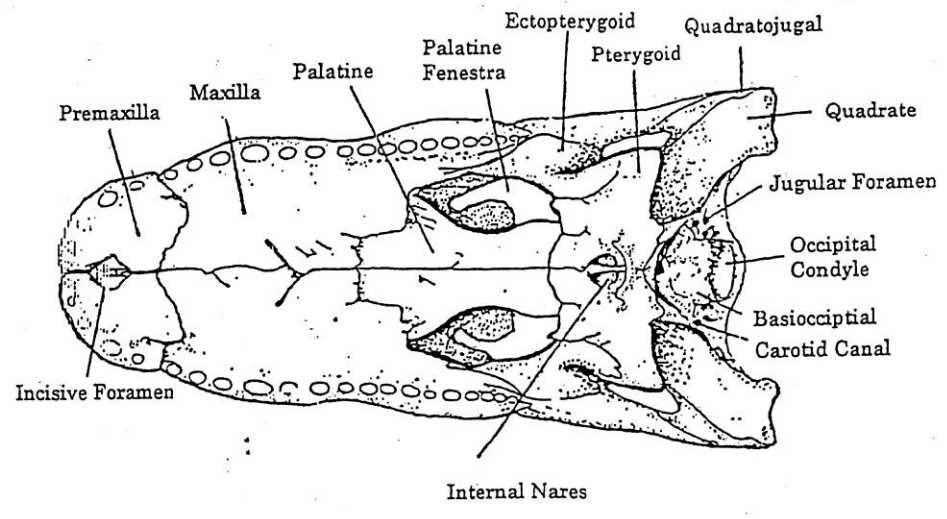
Carolina Biological Supply Company, Burlington, North Carolina 27216
 and Powell Laboratories, Gladstone, Oregon 97027

Printed in U.S.A. © 1965 Carolina Biological Supply Company

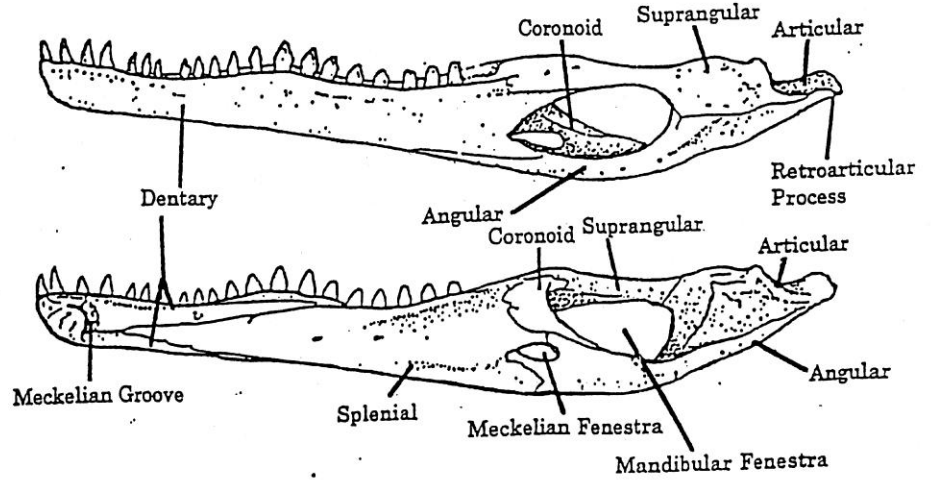
Dorsal View



Ventral View

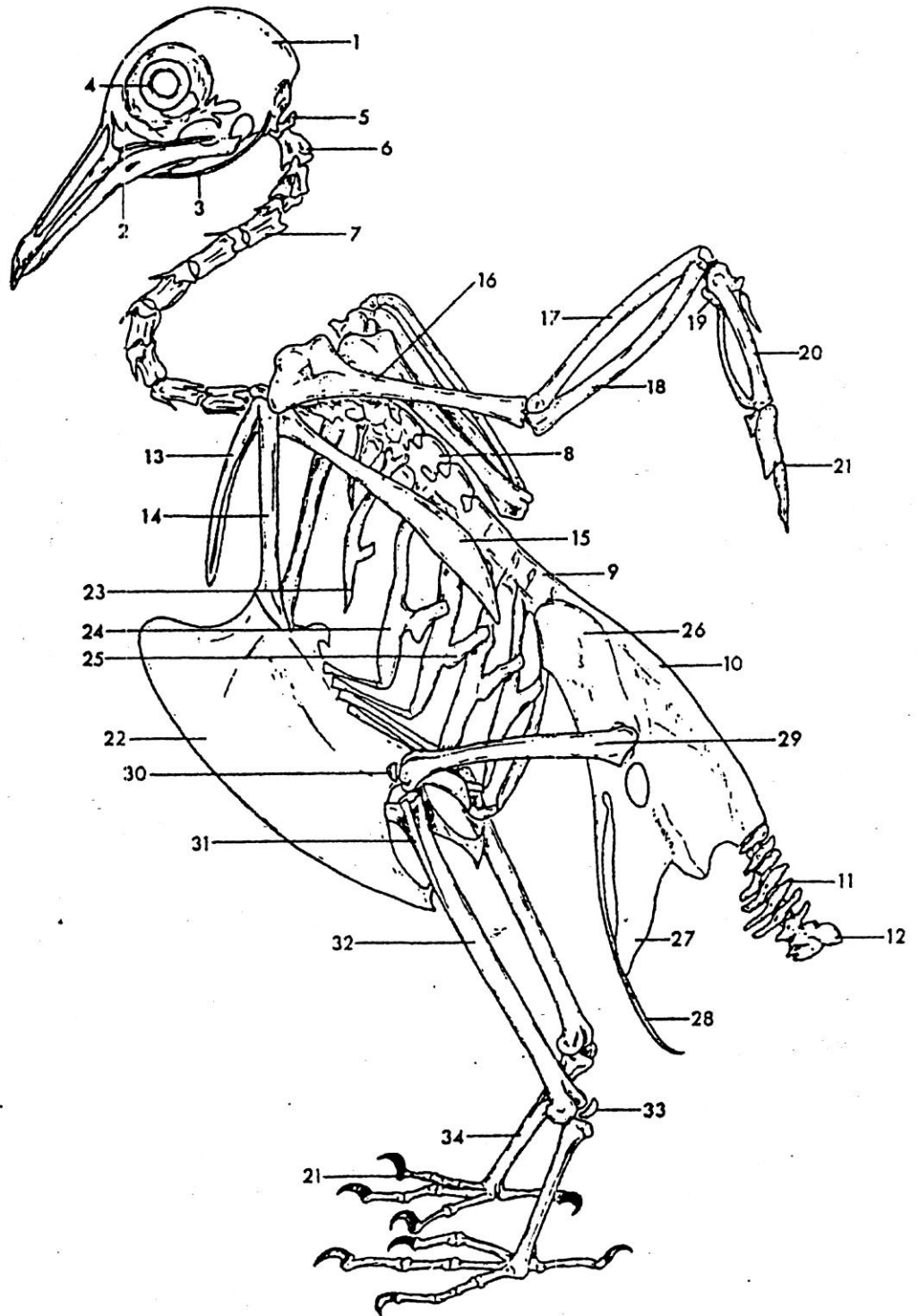


Alligator Lower Jaw - Lateral View



Alligator Lower Jaw - Medial View

PIGEON SKELETON



1. Skull
2. Mandible
3. Hyoid
4. Eye bone
5. Atlas
6. Axis
7. Cervical vertebra (15)
8. Thoracic vertebra (5)
9. Lumbar vertebra (6)
10. Synsacrum
11. Caudal vertebra (15)
12. Pygostyle
13. ~~Clavicle~~ furcula
14. Coracoid
15. Scapula
16. Humerus
17. Radius
18. Ulna
19. Carpus
20. Carpometacarpus
21. Phalanges
22. Sternum
23. Cervical ribs
24. Thoracic ribs
25. Uncinate process
26. Ilium
27. Ischium
28. Pubis
29. Femur
30. Patella
31. Fibula
32. Tibiotarsus
- ~~33. Scapoid~~
34. Tarsometatarsus

Carolina Biological Supply Company, Burlington, North Carolina 27215

Printed in U.S.A. © 1972 Carolina Biological Supply Company

Bioreview® She
5110



