

Tarleton State University
Stephenville Campus

SPRING 2004 FACTS

Uncertified Data Compiled March 4, 2004

Data is pending certification - minor changes may occur

Compiled by:
The Office of Planning, Evaluation and Institutional Research
Dr. Brad Chilton, Executive Director
Mr. Don Ross, Senior Research Associate
Ms. Freddie LeJeune, Administrative Assistant

CONTENTS

Spring 2004 Enrollment by Counties	1
Spring 2004 Enrollment by Counties (map)	7
Spring 2004 Enrollment by State and Country	8
Headcount by Geographical Location and Transfer College Type	9
Number of Students by College	10
Number of Students and Credit Hours by Major.....	11
Number of Credit Hours by College	13
Full-Time Equivalent Students by College	14
Part-Time/Full-Time Headcount by Gender and Status	15
Headcount by Gender, Ethnicity and Status	16
Headcount by Age Spring 2004	17

Tarleton State University
County Representation of Students Registered Through Stephenville Campus
Spring 2004 Compared to Spring 2003

COUNTY	FEM	MALE	SPRG 2003	FEM	MALE	SPRG 2004	LOSS OR GAIN FROM 2002 TO 2003
Anderson	4	3	7	2	5	7	0.00%
Andrews	2	5	7	1		1	-85.71%
Angelina	0	1	1	1		1	0.00%
Aransas				4	1	5	NEW CNTY GAIN
Archer	6	7	13	4	1	5	-61.54%
Armstrong				3	2	5	NEW CNTY GAIN
Atascosa	0	3	3				CNTY LOSS
Austin	1	0	1	1	3	4	300.00%
Bailey	1	2	3		1	1	-66.67%
Bandera	7	6	13	5	3	8	-38.46%
Bastrop	5	9	14	10	7	17	21.43%
Baylor	2	0	2	3	1	4	100.00%
Bee	1	0	1	4	2	6	500.00%
Bell	95	66	161	59	66	125	-22.36%
Bexar	29	30	59	46	29	75	27.12%
Blanco	7	13	20	6	6	12	-40.00%
Borden	1	0	1	1		1	0.00%
Bosque	63	37	100	70	49	119	19.00%
Bowie	2	2	4	1		1	-75.00%
Brazoria	8	11	19	7	2	9	-52.63%
Brazos	5	8	13	8	5	13	0.00%
Brewster				2	1	3	NEW CNTY GAIN
Brisco							NO STUDENTS
Brooks							NO STUDENTS
Brown	111	63	174	118	89	207	18.97%
Burleson	4	1	5	2	1	3	-40.00%
Burnet	8	12	20	28	8	36	80.00%
Caldwell	2	3	5	2	2	4	-20.00%
Calhoun	0	3	3	1	1	2	-33.33%
Callahan	12	14	26	22	14	36	38.46%
Cameron	5	3	8	4	2	6	-25.00%
Camp	1	0	1	2		2	100.00%
Carson	0	1	1	3	2	5	400.00%
Cass	0	2	2	1	1	2	0.00%
Castro	3	2	5		1	1	-80.00%
Chambers				2	2	4	NEW CNTY GAIN
Cherokee	0	1	1	1	2	3	200.00%
Childress	0	1	1	1	2	3	200.00%
Clay	8	6	14	7	4	11	-21.43%
Cochran	1	2	3				CNTY LOSS
Coke	4	1	5	4	3	7	40.00%
Coleman	13	8	21	16	12	28	33.33%
Collin	16	19	35	47	37	84	140.00%
Collingsworth	3	1	4	1		1	-75.00%
Colorado	0	2	2	1	1	2	0.00%
Comal	13	11	24	11	12	23	-4.17%
Comanche	115	74	189	116	67	183	-3.17%
Concho	0	1	1	1	2	3	200.00%

Note: Counts include Flexible Entry Students from Fall 2003

Tarleton State University
County Representation of Students Registered Through Stephenville Campus
Spring 2004 Compared to Spring 2003

COUNTY	FEM	MALE	SPRG 2003	FEM	MALE	SPRG 2004	LOSS OR GAIN FROM 2002 TO 2003
Cooke	6	8	14	9	10	19	35.71%
Coryell	48	142	190	55	155	210	10.53%
Cottle	1	3	4	1	3	4	0.00%
Crane	1	1	2	4	1	5	150.00%
Crockett	0	1	1				CNTY LOSS
Crosby	0	2	2	1	1	2	0.00%
Culbertson							NO STUDENTS
Dallam	2	0	2	1	2	3	50.00%
Dallas	65	67	132	97	79	176	33.33%
Dawson					1	1	NEW CNTY GAIN
De Witt	0	2	2	1	2	3	50.00%
Deaf Smith				1		1	NEW CNTY GAIN
Delta				1		1	NEW CNTY GAIN
Denton	25	30	55	46	31	77	40.00%
Dickens	0	1	1	1		1	0.00%
Dimmitt							NO STUDENTS
Donley							NO STUDENTS
Duval				1	1	2	NEW CNTY GAIN
Eastland	94	54	148	98	55	153	3.38%
Ector	3	5	8	4	5	9	12.50%
Edwards				1	1	2	NEW CNTY GAIN
El Paso	4	5	9	2	3	5	-44.44%
Ellis	29	32	61	40	38	78	27.87%
Erath	593	457	1050	565	432	997	-5.05%
Falls	6	9	15	9	15	24	60.00%
Fannin	4	0	4	3		3	-25.00%
Fayette	0	4	4		2	2	-50.00%
Fisher	2	2	4	2		2	-50.00%
Floyd	2	0	2	3	3	6	200.00%
Foard	3	2	5	1	1	2	-60.00%
Fort Bend	3	9	12	11	8	19	58.33%
Franklin					2	2	NEW CNTY GAIN
Freestone	3	2	5	4	3	7	40.00%
Frio							NO STUDENTS
Gains	2	3	5	1	4	5	0.00%
Galveston	3	5	8	7	1	8	0.00%
Garza	1	0	1				CNTY LOSS
Gillespie	8	16	24	12	11	23	-4.17%
Glasscock	2	0	2	3	1	4	100.00%
Goliad	0	2	2				CNTY LOSS
Gonzales	2	2	4	1	3	4	0.00%
Gray	2	0	2	3	1	4	100.00%
Grayson	12	10	22	8	11	19	-13.64%
Gregg	2	1	3		2	2	-33.33%
Grimes	3	1	4	2		2	-50.00%
Guadalupe	5	8	13	7	6	13	0.00%
Hale	1	6	7	2	6	8	14.29%
Hall					1	1	NEW CNTY GAIN

Note: Counts include Flexible Entry Students from Fall 2003

Tarleton State University
County Representation of Students Registered Through Stephenville Campus
Spring 2004 Compared to Spring 2003

COUNTY	FEM	MALE	SPRG 2003	FEM	MALE	SPRG 2004	LOSS OR GAIN FROM 2002 TO 2003
Hamilton	67	47	114	77	57	134	17.54%
Hansford	4	2	6	2	4	6	0.00%
Hardeman	4	4	8	4	3	7	-12.50%
Hardin					2	2	NEW CNTY GAIN
Harris	34	31	65	48	37	85	30.77%
Harrison	0	1	1	2	6	8	700.00%
Hartleya	0	1	1		3	3	200.00%
Haskell	3	2	5	7	7	14	180.00%
Hays	4	5	9	14	12	26	188.89%
Hemphill					2	2	NEW CNTY GAIN
Henderson	4	11	15	4	5	9	-40.00%
Hidalgo	11	8	19	2	2	4	-78.95%
Hill	40	39	79	44	38	82	3.80%
Hockley	0	1	1	1		1	0.00%
Hood	145	80	225	187	120	307	36.44%
Hopkins	1	0	1	3	3	6	500.00%
Houston	2	1	3	2	1	3	0.00%
Howard	6	6	12	1	5	6	-50.00%
Hudspeth							NO STUDENTS
Hunt	3	3	6	6	5	11	83.33%
Hutchison	2	0	2	4	4	8	300.00%
Irion	1	1	2				CNTY LOSS
Jack	16	10	26	25	18	43	65.38%
Jackson	0	3	3		4	4	33.33%
Jasper				1		1	NEW CNTY GAIN
Jeff Davis	0	1	1				CNTY LOSS
Jefferson				3	3	6	NEW CNTY GAIN
Jim Hogg	2	0	2				CNTY LOSS
Jim Wells	4	0	4	2	2	4	0.00%
Johnson	137	96	233	168	104	272	16.74%
Jones	11	17	28	17	16	33	17.86%
Karnes	2	1	3		3	3	0.00%
Kaufman	6	14	20	9	9	18	-10.00%
Kendall	6	4	10	5	5	10	0.00%
Kennedy							NO STUDENTS
Kent					1	1	NEW CNTY GAIN
Kerr	4	6	10	16	7	23	130.00%
Kimble	3	2	5	5	9	14	180.00%
King					1	1	NEW CNTY GAIN
Kinney	1	0	1		1	1	0.00%
Kleberg	1	1	2	1	1	2	0.00%
Knox	1	4	5	3	8	11	120.00%
La Salle							NO STUDENTS
Lamar	0	3	3	4	3	7	133.33%
Lamb	1	1	2	1	1	2	0.00%
Lampassas	28	13	41	20	21	41	0.00%
Lavaca	0	2	2	2	5	7	250.00%
Lee	1	0	1	1	2	3	200.00%

Note: Counts include Flexible Entry Students from Fall 2003

Tarleton State University
County Representation of Students Registered Through Stephenville Campus
Spring 2004 Compared to Spring 2003

COUNTY	FEM	MALE	SPRG 2003	FEM	MALE	SPRG 2004	LOSS OR GAIN FROM 2002 TO 2003
Leon	1	0	1		2	2	100.00%
Liberty				3	4	7	NEW CNTY GAIN
Limestone	6	7	13	5	5	10	-23.08%
Lipscomb				1		1	NEW CNTY GAIN
Live Oak				2	1	3	NEW CNTY GAIN
Llano	8	7	15	9	7	16	6.67%
Loving							NO STUDENTS
Lubbock	5	10	15	3	11	14	-6.67%
Lynn	0	2	2				CNTY LOSS
Madison	1	2	3	1	1	2	-33.33%
Marion	0	1	1	1		1	0.00%
Martin	1	0	1				CNTY LOSS
Mason	2	1	3		3	3	0.00%
Matagorda	3	5	8	2	3	5	-37.50%
Maverick	2	3	5	1	1	2	-60.00%
McCulloch	5	12	17	10	8	18	5.88%
McLennan	96	72	168	167	112	279	66.07%
McMullen				1		1	NEW CNTY GAIN
Medina	10	9	19	6	4	10	-47.37%
Menard	0	2	2		1	1	-50.00%
Midland	10	9	19	12	6	18	-5.26%
Milam	5	3	8	4	8	12	50.00%
Mills	22	16	38	29	15	44	15.79%
Mitchell	1	0	1	2	1	3	200.00%
Montague	7	13	20	15	14	29	45.00%
Montgomery	7	7	14	16	10	26	85.71%
Moore	1	3	4	1	1	2	-50.00%
Morris				1	1	2	NEW CNTY GAIN
Motley	1	2	3				CNTY LOSS
Nacogdoches	4	2	6	2	3	5	-16.67%
Navarro	7	9	16	12	10	22	37.50%
Newton							NO STUDENTS
Nolan	5	3	8	2		2	-75.00%
Nueces	4	3	7	4	4	8	14.29%
Ochiltree	0	1	1		1	1	0.00%
Oldham							NO STUDENTS
Orange	1	3	4				CNTY LOSS
Palo Pinto	75	60	135	93	51	144	6.67%
Panola	1	0	1				CNTY LOSS
Parker	141	83	224	161	101	262	16.96%
Parmer	1	0	1		2	2	100.00%
Pecos	4	2	6	1	2	3	-50.00%
Polk	5	1	6				CNTY LOSS
Potter	4	2	6	3		3	-50.00%
Presidio							NO STUDENTS
Rains							NO STUDENTS
Randall	2	2	4	6	3	9	125.00%
Reagan	1	1	2		2	2	0.00%

Note: Counts include Flexible Entry Students from Fall 2003

Tarleton State University
County Representation of Students Registered Through Stephenville Campus
Spring 2004 Compared to Spring 2003

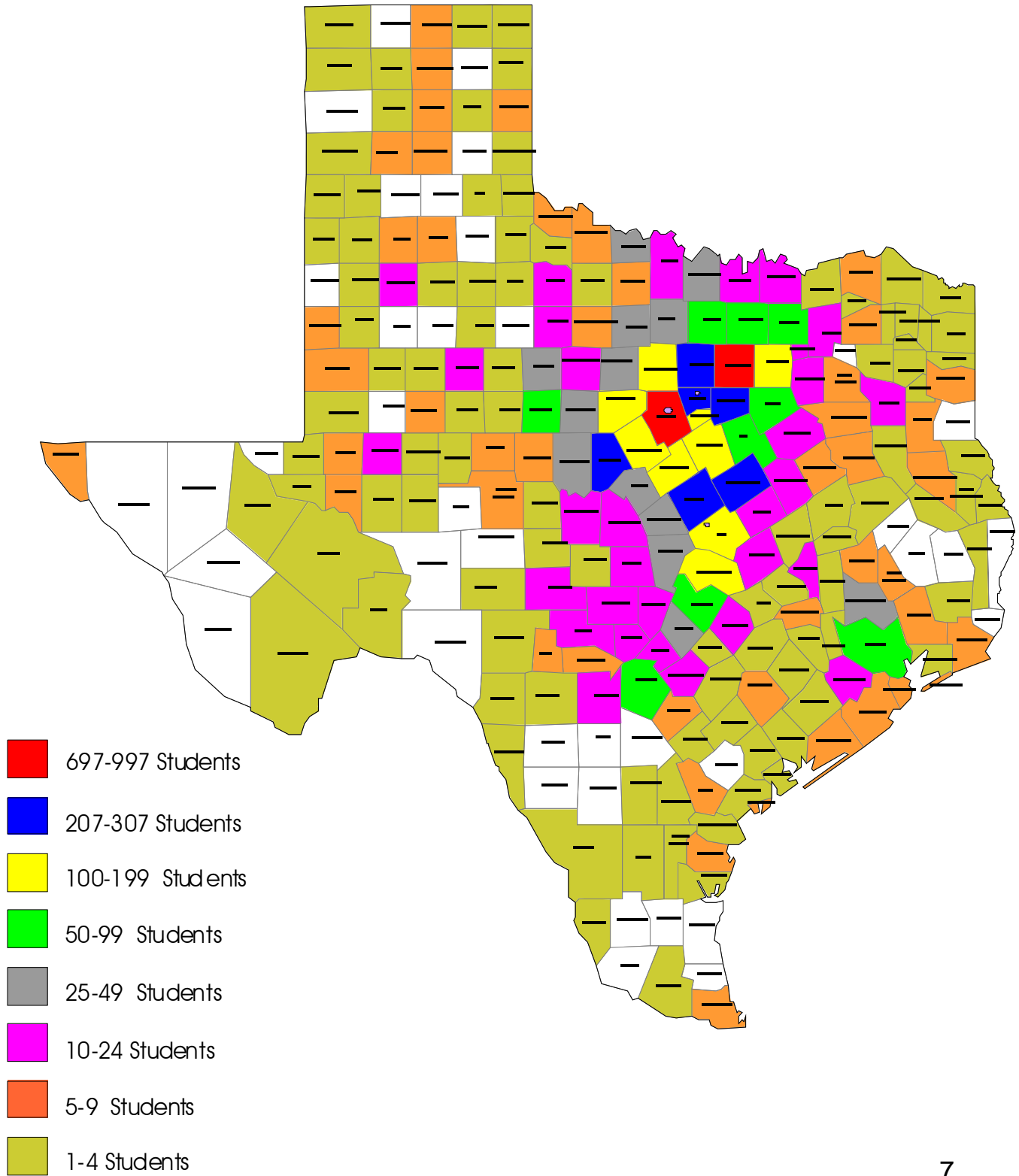
COUNTY	FEM	MALE	SPRG 2003	FEM	MALE	SPRG 2004	LOSS OR GAIN FROM 2002 TO 2003
Real	1	0	1	4	1	5	400.00%
Red River				2		2	NEW CNTY GAIN
Reeves	5	1	6	1	2	3	-50.00%
Refugio	0	2	2		1	1	-50.00%
Roberts							NO STUDENTS
Robertson	2	5	7	1	3	4	-42.86%
Rockwall	3	1	4	5	11	16	300.00%
Runnels	4	4	8	3	3	6	-25.00%
Rusk	0	1	1	1	4	5	400.00%
Sabine					1	1	NEW CNTY GAIN
San Augustine					1	1	NEW CNTY GAIN
San Jacinto	2	1	3	5	2	7	133.33%
San Patricio	3	3	6		2	2	-66.67%
San Saba	12	9	21	11	10	21	0.00%
Schleicher							NO STUDENTS
Scurry	3	2	5	7	4	11	120.00%
Shackelford	11	3	14	10	4	14	0.00%
Shelby					1	1	NEW CNTY GAIN
Sherman							NO STUDENTS
Smith	2	2	4	7	6	13	225.00%
Somervell	50	33	83	55	48	103	24.10%
Starr							NO STUDENTS
Stephens	29	25	54	23	18	41	-24.07%
Sterling	1	0	1	2		2	100.00%
Stonewall							NO STUDENTS
Sutton	0	1	1	1	1	2	100.00%
Swisher							NO STUDENTS
Tarrant	221	165	386	399	298	697	80.57%
Taylor	38	23	61	33	39	72	18.03%
Terrell	1	0	1	1	1	2	100.00%
Terry				2	1	3	NEW CNTY GAIN
Throckmorton	1	7	8	5	2	7	-12.50%
Titus				4		4	NEW CNTY GAIN
Tom Green	2	3	5	6	3	9	80.00%
Travis	30	30	60	29	25	54	-10.00%
Trinity	1	0	1				CNTY LOSS
Tyler							NO STUDENTS
Upshur	2	0	2		2	2	0.00%
Upton	0	1	1		1	1	0.00%
Uvalde	0	3	3	1	1	2	-33.33%
Val Verde	0	2	2				CNTY LOSS
Van Zandt	6	6	12	2	6	8	-33.33%
Victoria	1	0	1	3		3	200.00%
Walker	1	2	3	6	2	8	166.67%
Waller	1	2	3	2	1	3	0.00%
Ward	2	1	3	4		4	33.33%
Washington	1	1	2	6	1	7	250.00%
Webb					1	1	NEW CNTY GAIN

Note: Counts include Flexible Entry Students from Fall 2003

Tarleton State University
County Representation of Students Registered Through Stephenville Campus
Spring 2004 Compared to Spring 2003

COUNTY	FEM	MALE	SPRG 2003	FEM	MALE	SPRG 2004	LOSS OR GAIN FROM 2002 TO 2003
Wharton	1	3	4	3		3	-25.00%
Wheeler	1	1	2	2	4	6	200.00%
Wichita	6	9	15	14	11	25	66.67%
Wilbarger	4	3	7	2	4	6	-14.29%
Willacy							NO STUDENTS
Williamson	50	50	100	55	54	109	9.00%
Wilson	8	6	14	4	1	5	-64.29%
Winkler	2	0	2	1	2	3	50.00%
Wise	26	32	58	26	38	64	10.34%
Wood	1	4	5	1	1	2	-60.00%
Yoakum	0	3	3	3	2	5	66.67%
Young	17	12	29	25	21	46	58.62%
Zapata				0	1	1	NEW CNTY GAIN
Zavala	2	0	2				CNTY LOSS
TOTALS	3053	2567	5620	3681	2934	6615	17.70%

Tarleton State University - Stephenville Campus
SPRING 2004 Enrollment By Counties

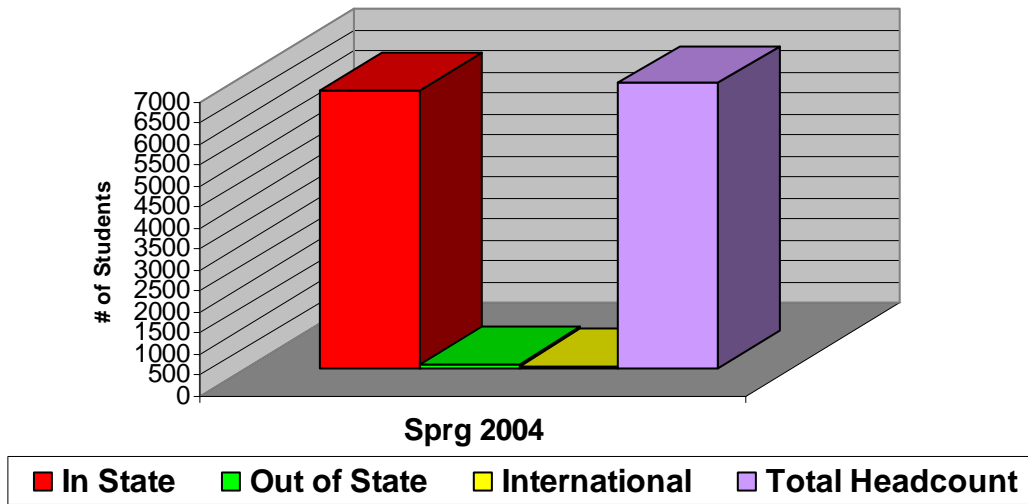


Tarleton State University – Stephenville Campus
Enrollments By State and Country
SPRING 2004

Out of State Students	Female	Male	Count	Out of Country	Female	Male	Count
Alabama	1	5	6	Antigua & Barbuda	1	1	2
Alaska	1	1	2	Brazil		1	1
American Samoa		1	1	China		1	1
Arizona	3	1	4	Colombia		2	2
Arkansas		1	1	Germany		1	1
California	2	7	9	Guatemala	1	5	6
Colorado	3	2	5	Hong Kong	1		1
Florida		1	1	India	1	7	8
Georgia	1	1	2	Kenya	1		1
Idaho	1	1	2	Macao	1		1
Illinois	1		1	Mexico	2	3	5
Indiana		1	1	Nepal		2	2
Iowa	2		2	Nicaragua		1	1
Kansas		1	1	Nigeria		1	1
Louisiana	1	6	7	Peru	1	1	2
Maryland	1	1	2	Philippines	1		1
Michigan	6	2	8	Saudi Arabia		1	1
Mississippi		2	2	South Africa		1	1
Missouri		1	1	South Korea	1		1
Montana	3		3	Spain	1		1
New Jersey	1		1	Switzerland		1	1
New Mexico	6	6	12	Taiwan	1		1
New York		1	1	Thailand		3	3
North Carolina	1	1	2	Trinidad & Tobago	1		1
Oklahoma	7	2	9	Zimbabwe	2	1	3
Oregon	1		1	Count=====>	16	33	49
South Carolina	1		1				
South Dakota		1	1				
Tennessee	1	1	2				
Virgin Islands	1		1				
Virginia	2		2				
Washington	1	5	6				
Wisconsin	1	1	2				
Wyoming	1	1	2				
Count=====>	50	54	104				

**Tarleton State University – Stephenville Campus
Headcount by Geographical Location and Transfer College Type - SPRING 2004**

Student Headcount by Geographical Origins



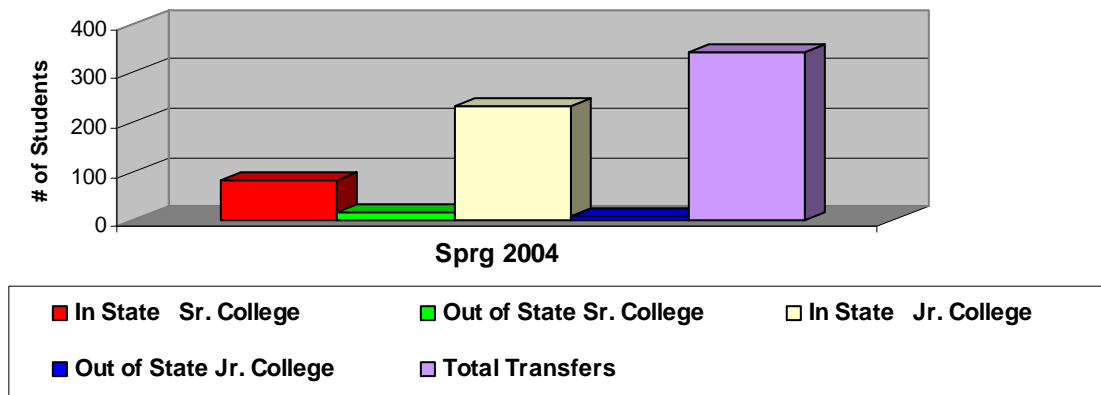
Student Headcount by Geographical Origins

Semester	In State	Out of State	International	Total Headcount
Sprg 2004	6615	104	49	6768

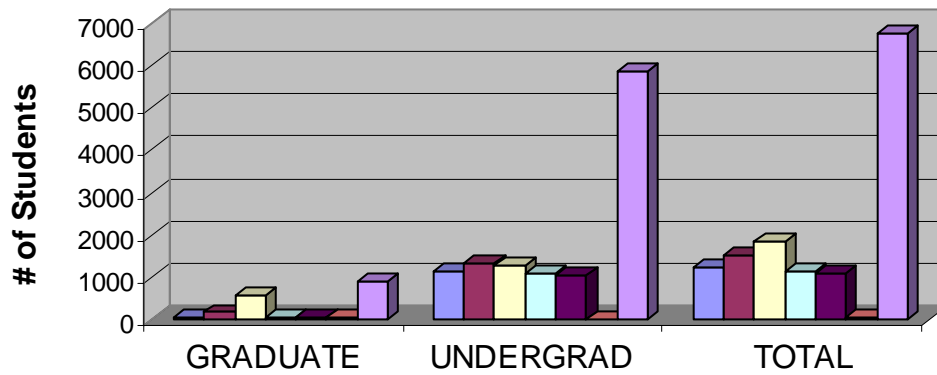
Student Headcount by Transfer College Type

Semester	In State Sr. College	Out of State Sr. College	In State Jr. College	Out of State Jr. College	Total Transfers
Sprg 2004	82	18	231	9	340

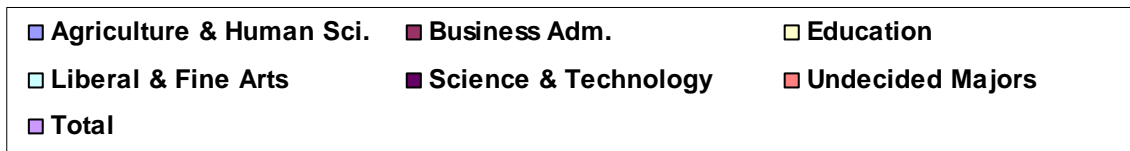
Student Headcount by Transfer College Type



**Tarleton State University – Stephenville Campus
Student Headcount by College - SPRING 2004**



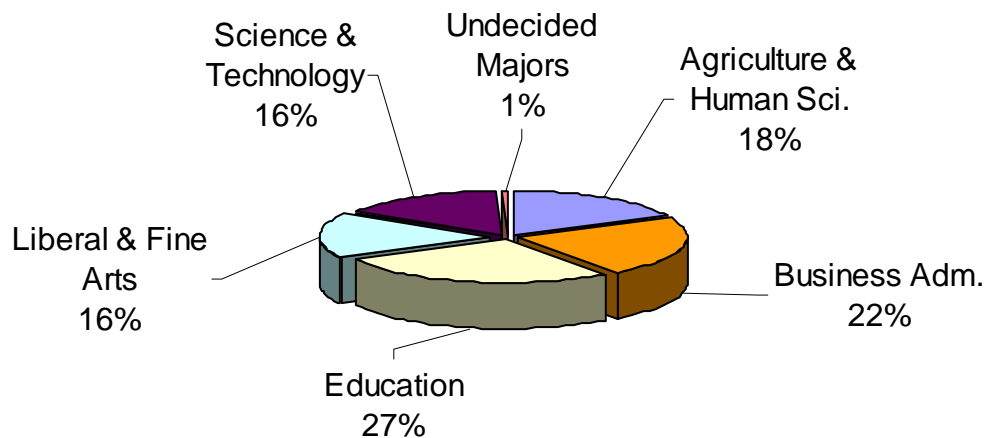
Spring 2004 Semester



Student Headcount by College of Major

	Agriculture & Human Sci.	Business Adm.	Education	Liberal & Fine Arts	Science & Technology	Undecided Majors	Total
GRADUATE	65	168	559	36	37	32	897
UNDERGRAD	1150	1328	1265	1080	1044	4	5871
TOTAL	1215	1496	1824	1116	1081	36	6768

2004 Spring Headcount By College



Tarleton State University – Stephenville Campus
Semester Credit Hours by Major - SPRING 2004

UNDERGRADUATE SEM CREDIT HRS

COLLEGE OF AGRI. & HUMAN SCIENCES

	NUM	SCH
Agribusiness	102	1439
Agricultural Economics	22	317
Agricultural Occupations	5	64
Agricultural Services and Development	324	4660
Agronomy and Range Management	30	432
Animal Industries	35	473
Animal Production	41	567
Animal Science	173	2373
Dietetics	7	86
Farm and Ranch Management	5	70
General Agriculture	24	297
Horticulture and Landscape Management	76	1065
Human Sciences	125	1663
International Agri Services	4	62
Pre Veterinary Medicine	86	1236
Wildlife Management	91	1291
College Total	1150	16095

COLLEGE OF BUSINESS ADM.

Accounting	131	1697
Administrative Systems	26	364
Business Administration	59	677
Business Occupations	73	606
Computer Information Systems	205	2617
Economics	19	276
Finance	49	641
Human Resources Management	22	282
Interdisciplinary Business Management	69	888
Marketing	474	4841
College Total	1328	15496

COLLEGE OF EDUCATION

Certification	22	198
Exercise and Sport Studies	540	7596
Interdisciplinary Studies	557	7191
Psychology	146	1936
College Total	1265	16921

DIVISION OF GENERAL STUDIES

Liberal Arts	50	666
Undecided	4	35
Division Total	54	701

GRADUATE SEM CREDIT HRS

COLLEGE OF AGRI. & HUMAN SCIENCES

	NUM	SCH
Agricultural Education	35	327
Agriculture	30	270
College Total	65	597

COLLEGE OF BUSINESS ADM.

Business Administration	43	306
Human Resources Management	30	159
Information Systems Management	68	450
College Total	168	1065

COLLEGE OF EDUCATION

Counseling	43	210
Counseling Psychology	37	234
Curriculum and Instruction	111	430
Educational Administration	209	1188
Educational Diagnostician	2	15
Educational Leadership	15	90
Educational Psychology	5	36
Physical Education	33	250
Secondary Education	1	3
Team Mate	103	320
College Total	559	2776

COLLEGE OF LIBERAL & FINE ARTS

Criminal Justice	13	72
English	10	87
History	13	81
College Total	36	240

COLLEGE OF SCIENCE AND TECH.

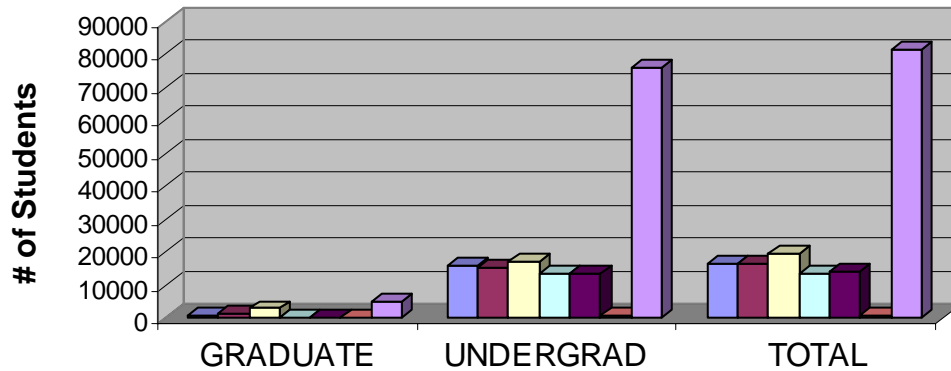
Biology	19	126
Environmental Science	9	75
Mathematics	9	67
College Total	37	268

GRADUATE COLLEGE

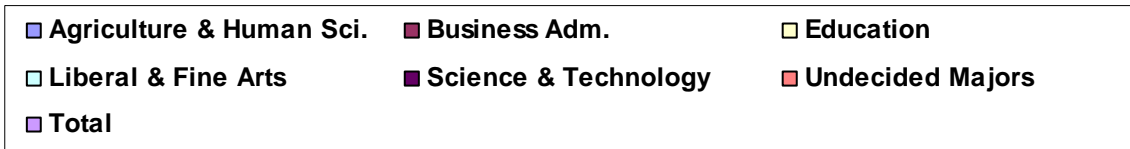
Undecided	32	134
College Total	32	134

STEPH. CAMP. TOTAL GD SCH 897 5080

**Tarleton State University – Stephenville Campus
Semester Credit Hours by College - SPRING 2004**



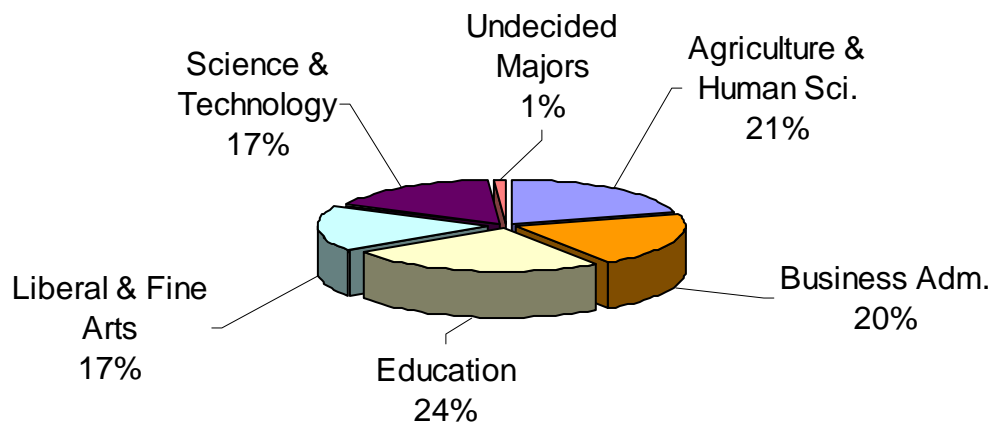
Spring 2004 Semester



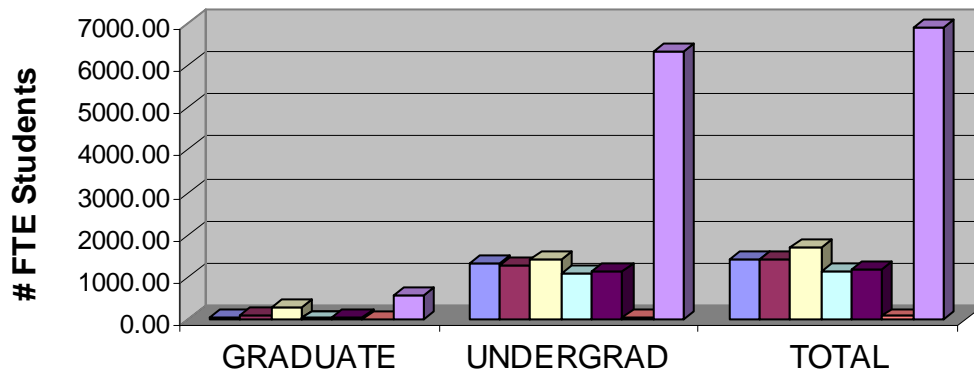
Semester Credit Hours by College

Agriculture & Human Sci.	Business Adm.	Education	Liberal & Fine Arts	Science & Technology	Undecided Majors	Total
597	1065	2776	240	268	134	5080
16095	15496	16921	13303	13681	701	76197
16692	16561	19697	13543	13949	835	81277

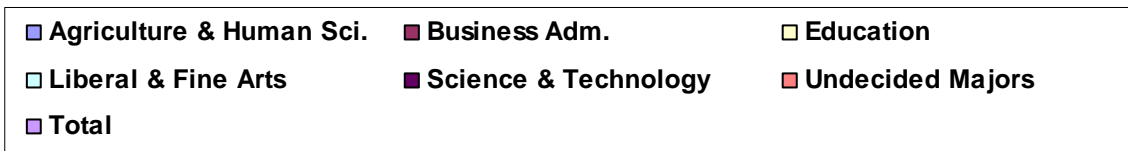
2004 Spring Semester Credit Hrs. By College



**Tarleton State University – Stephenville Campus
Full – Time Equivalent Students by College - SPRING 2004**



Spring 2004 Semester

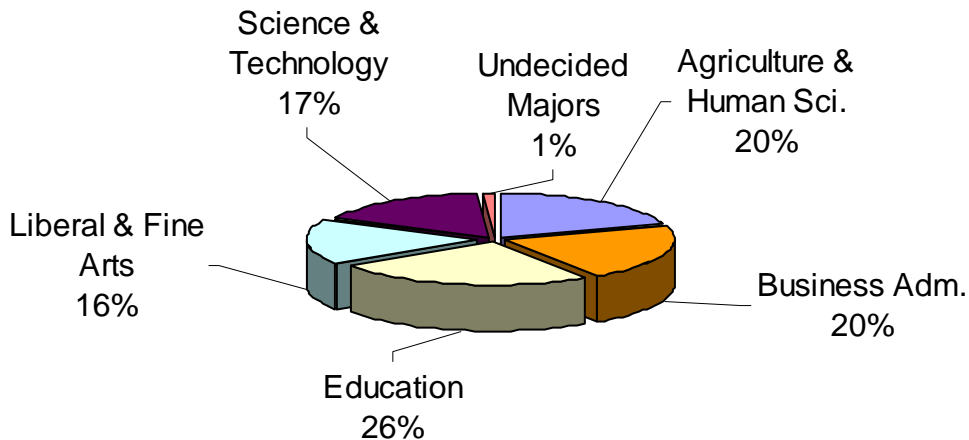


***Full-Time Equivalency by College**

	Agriculture & Human Sci.	Business Adm.	Education	Liberal & Fine Arts	Science & Technology	Undecided Majors	Total
GRADUATE	66.33	118.33	308.44	26.67	29.78	14.89	564.44
UNDERGRAD	1341.25	1291.33	1410.08	1108.58	1140.08	58.42	6349.74
TOTAL	1407.58	1409.66	1718.52	1135.25	1169.86	73.31	6914.18

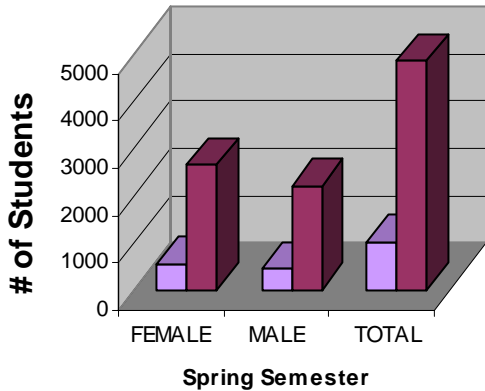
*Note: Full-time computed as 12 SCH for undergraduates and 9 SCH for graduates.

2004 Semester FTE By College



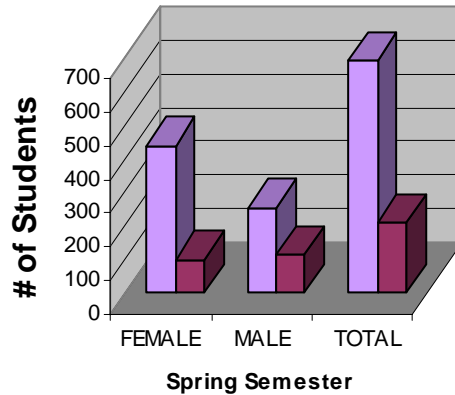
Tarleton State University – Stephenville Campus
Part-Time/Full-Time Headcount by Gender and Status - SPRING 2004

Undergraduate Part-Time/Full-Time



Legend: Part Time Ug (light purple), Full Time Ug (dark purple)

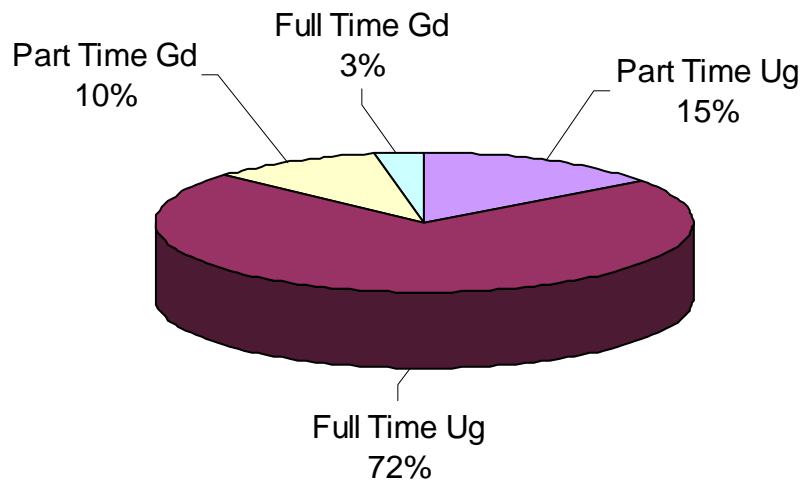
Graduate Part-Time/Full-Time



Legend: Part Time Gd (light purple), Full Time Gd (dark purple)

Gender	*Undergraduate		**Graduate		Total		Total Enrl
	Part Time Ug	Full Time Ug	Part Time Gd	Full Time Gd	Part Time	Full Time	
FEMALE	565	2650	435	97	1000	2747	3747
MALE	454	2202	253	112	707	2314	3021
TOTAL	1019	4852	688	209	1707	5061	6768

2004 Spring Semester

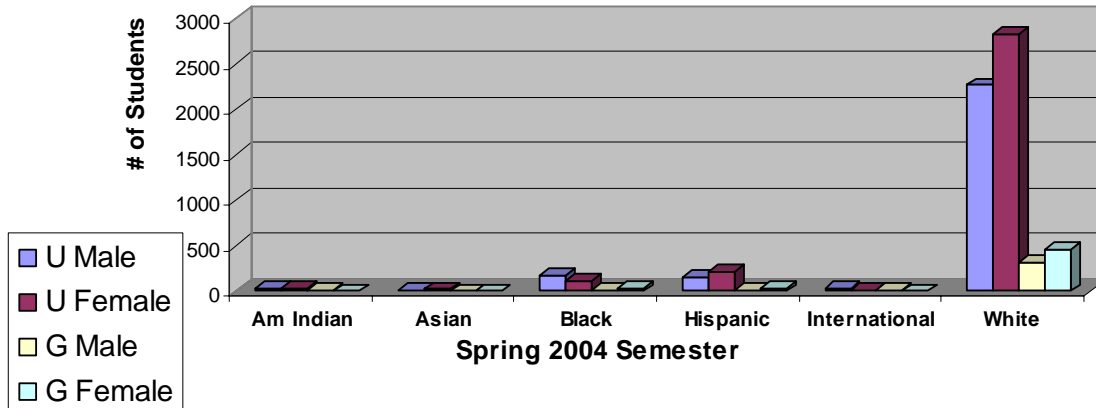


*Note: Undergraduate Full Time = 12 or more semester credit hours

**Note: Graduate Full Time = 9 or more semester credit hours

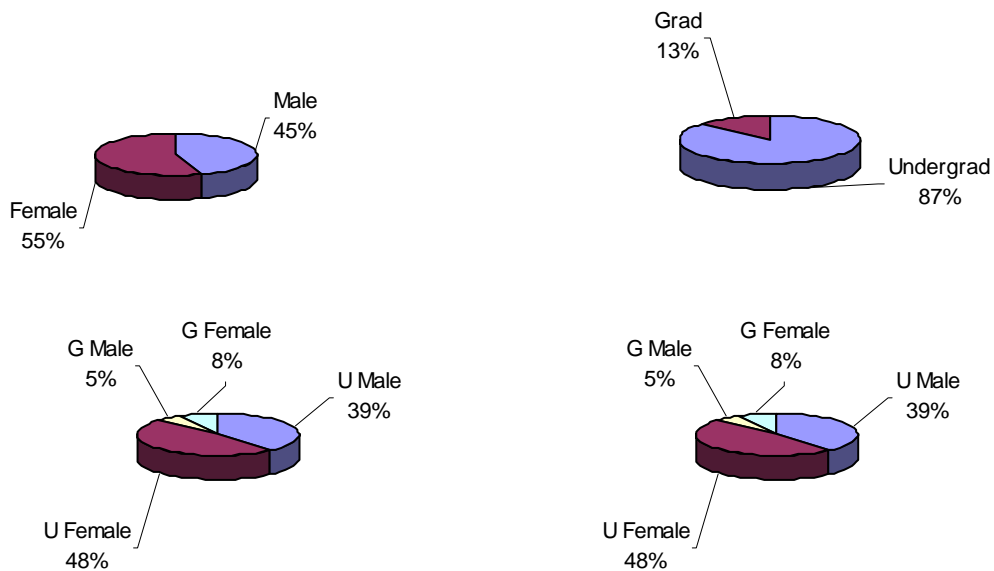
Tarleton State University – Stephenville Campus Ethnicity, and Status - SPRING 2004

Headcount by Gender, Ethnicity, & Status



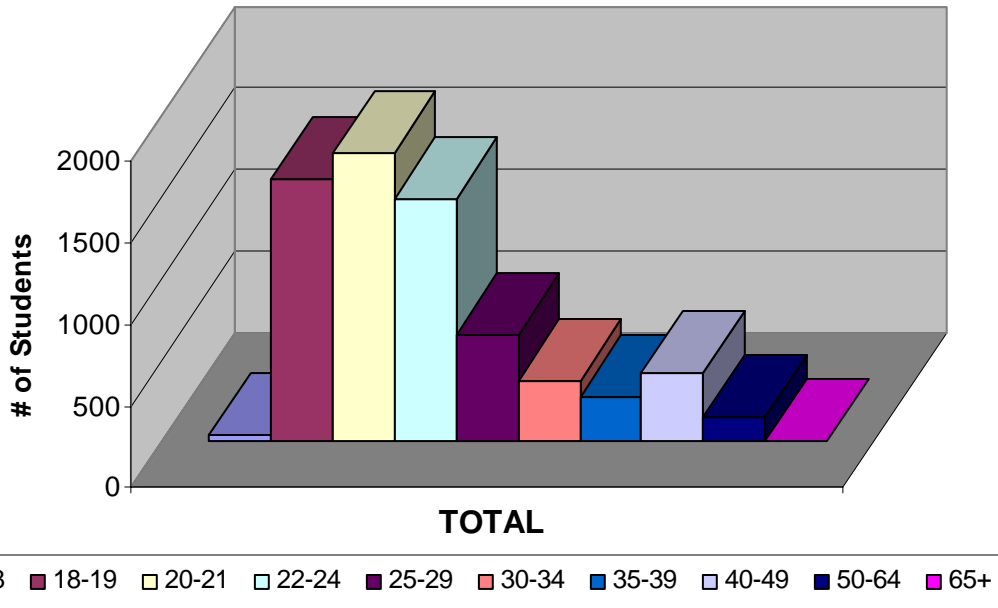
Ethnicity	Male	Female	Undergrad	Grad	U Male	U Female	G Male	G Female	Total
Am Indian	35	37	62	10	29	33	6	4	72
Asian	13	21	33	1	13	20	0	1	34
Black	186	148	283	51	170	113	16	35	334
Hispanic	170	238	365	43	156	209	14	29	408
International	34	16	37	13	25	12	9	4	50
White	2581	3286	5091	776	2263	2828	318	458	5867
Unknown	2	1	0	3	0	0	2	1	3
Total	3021	3747	5871	897	2656	3215	365	532	6768

Spring 2004 Semester



**Tarleton State University – Stephenville Campus
Headcount by Age - SPRING 2004**

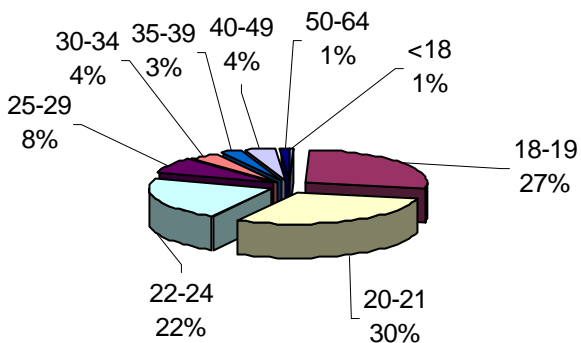
Age Distribution of Stephenville Campus Students



Headcount by Age

	<18	18-19	20-21	22-24	25-29	30-34	35-39	40-49	50-64	65+	Avg Age	total
UNDERGR	40	1601	1760	1305	450	245	166	237	65	2	23.17	5871
GRAD	0	0	9	181	199	130	112	182	80	4	34.08	897
TOTAL	40	1601	1769	1486	649	375	278	419	145	6	24.62	6768

Undergraduate Age Distribution



Graduate Age Distribution

